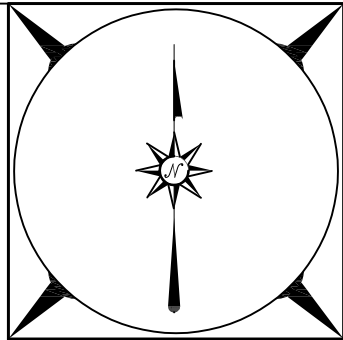
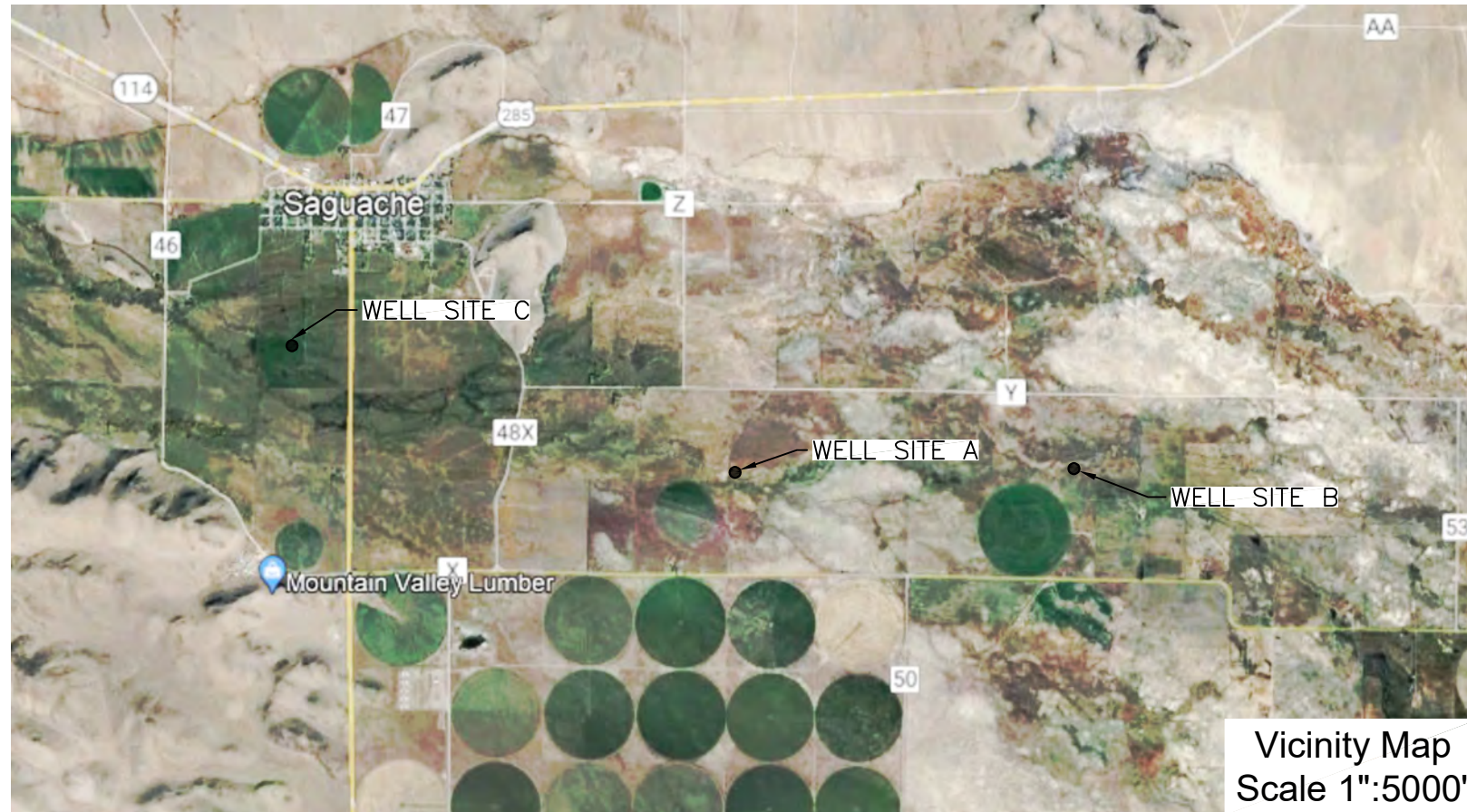


**SPECIAL IMPROVEMENT DISTRICT No. 5**  
**Large Capacity Augmentation Well #3, #4, & #5**  
 Located in Saguache County, Colorado  
 NW $\frac{1}{4}$  Sec.16, T.44N., R.8E, N.M.P.M &  
 NE $\frac{1}{4}$  Sec.15, T.44N., R.8E, N.M.P.M &  
 SE $\frac{1}{4}$  Sec.12, T.44N., R.7E, N.M.P.M

Sheet Index

- Sheet 1 of 13 – Title Sheet and Vicinity Map
- Sheet 2 of 13 – Site & Utility Notes
- Sheet 3 of 13 – Well A (SLB Property) Existing Conditions Map
- Sheet 4 of 13 – Well A (SLB Property) Proposed Construction Site Map
- Sheet 5 of 13 – Well A (SLB Property) Subsurface Detail
- Sheet 6 of 13 – Well B (Sheppard Property) Existing Conditions Map
- Sheet 7 of 13 – Well B (Sheppard Property) Proposed Construction Site Map
- Sheet 8 of 13 – Well B (Sheppard Property) Subsurface Detail
- Sheet 9 of 13 – Well C (Hazard Property) Existing Conditions Map
- Sheet 10 of 13 – Well C (Hazard Property) Proposed Construction Site Map
- Sheet 11 of 13 – Well C (Hazard Property) Subsurface Detail
- Sheet 12 of 13 – General Well Surface Detail
- Sheet 13 of 13 – Well Development Details



**DAVIS ENGINEERING SERVICE, INC.**

SINCE 1948

**DES**

THIS DRAWING IS THE PROPERTY OF DAVIS ENGINEERING SERVICE, INC. AND IS NOT TO BE REPRODUCED OR TRANSMITTED IN ANY FORM OR BY ANY MEANS, WITHOUT THE WRITTEN APPROVAL OF DAVIS ENGINEERING SERVICE, INC.

PROJECT	CHECKED	SCALE	DATE
CMP/SS	CMP	AS NOTED	3/23/26
CMP	CMP		

DAVIS ENGINEERING SERVICE, INC.  
 1000 W. ALAMOSA AVENUE  
 ALAMOSA, COLORADO 81101  
 PHONE: (719) 584-3004  
 FAX: (719) 584-3172

ELEVATION BASE ASSUMED



<small>CLIENT</small> Special Improvement District No. 5 8805 Independence Way Alamosa, CO 81101	Large Capacity Augmentation Wells #3, #4, & #5	Title Sheet and Vicinity Map
E02068		
Sheet 1 of 13		