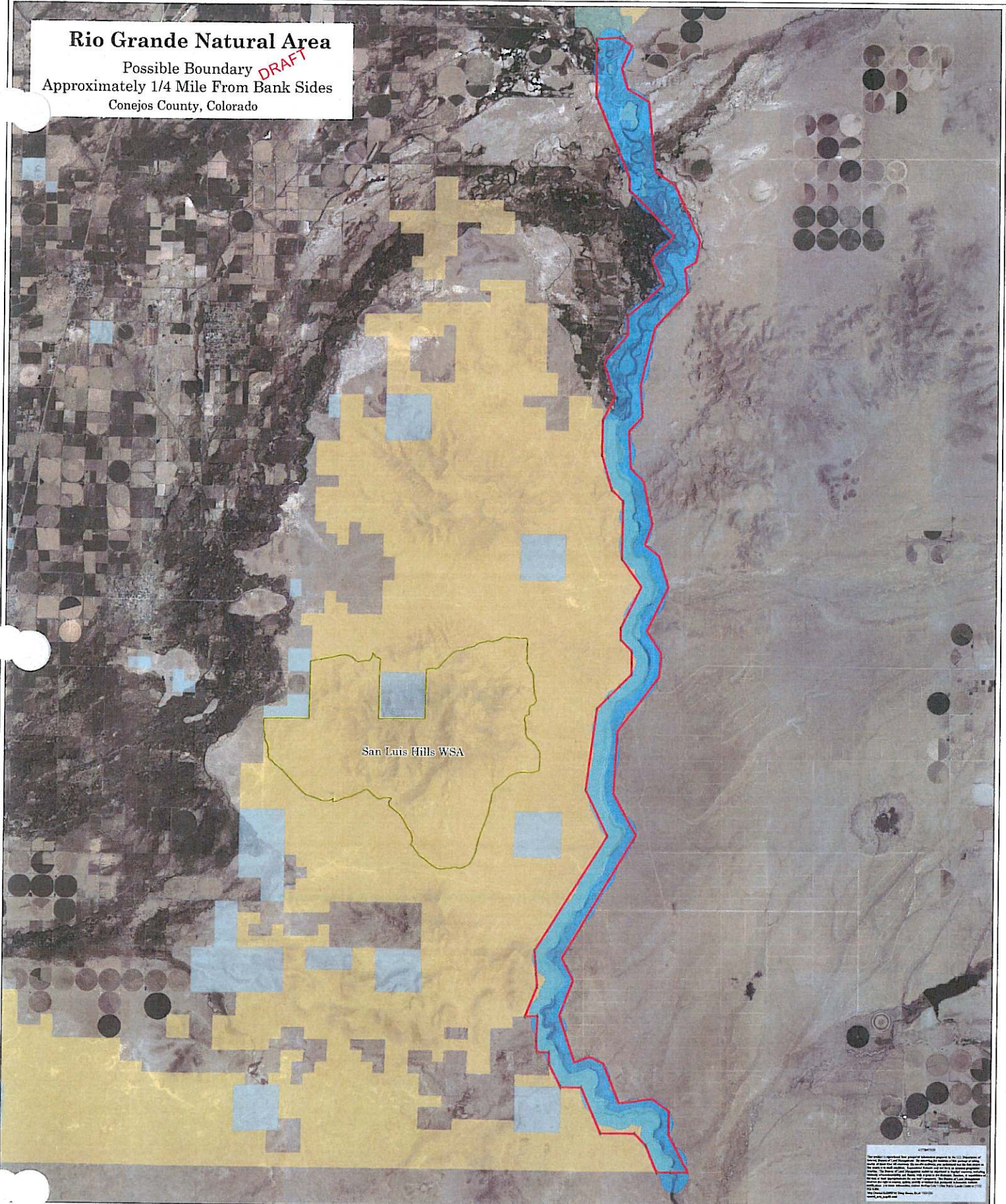









Rio Grande Natural Area

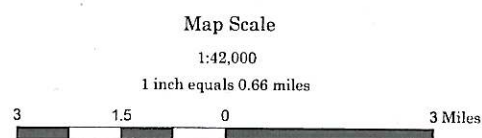
Possible Boundary **DRAFT**
 Approximately 1/4 Mile From Bank Sides
 Conejos County, Colorado



ATTENTION:
 This map was prepared for general information purposes by the U.S. Department of the Interior, Bureau of Land Management. It does not constitute a contract or any other legal instrument. It is not to be used as a basis for any legal action. The Bureau of Land Management is not responsible for any errors or omissions. The map is provided as a public service and is not to be used for any other purpose without the express written permission of the Bureau of Land Management. The map is not to be used for any other purpose without the express written permission of the Bureau of Land Management. The map is not to be used for any other purpose without the express written permission of the Bureau of Land Management.



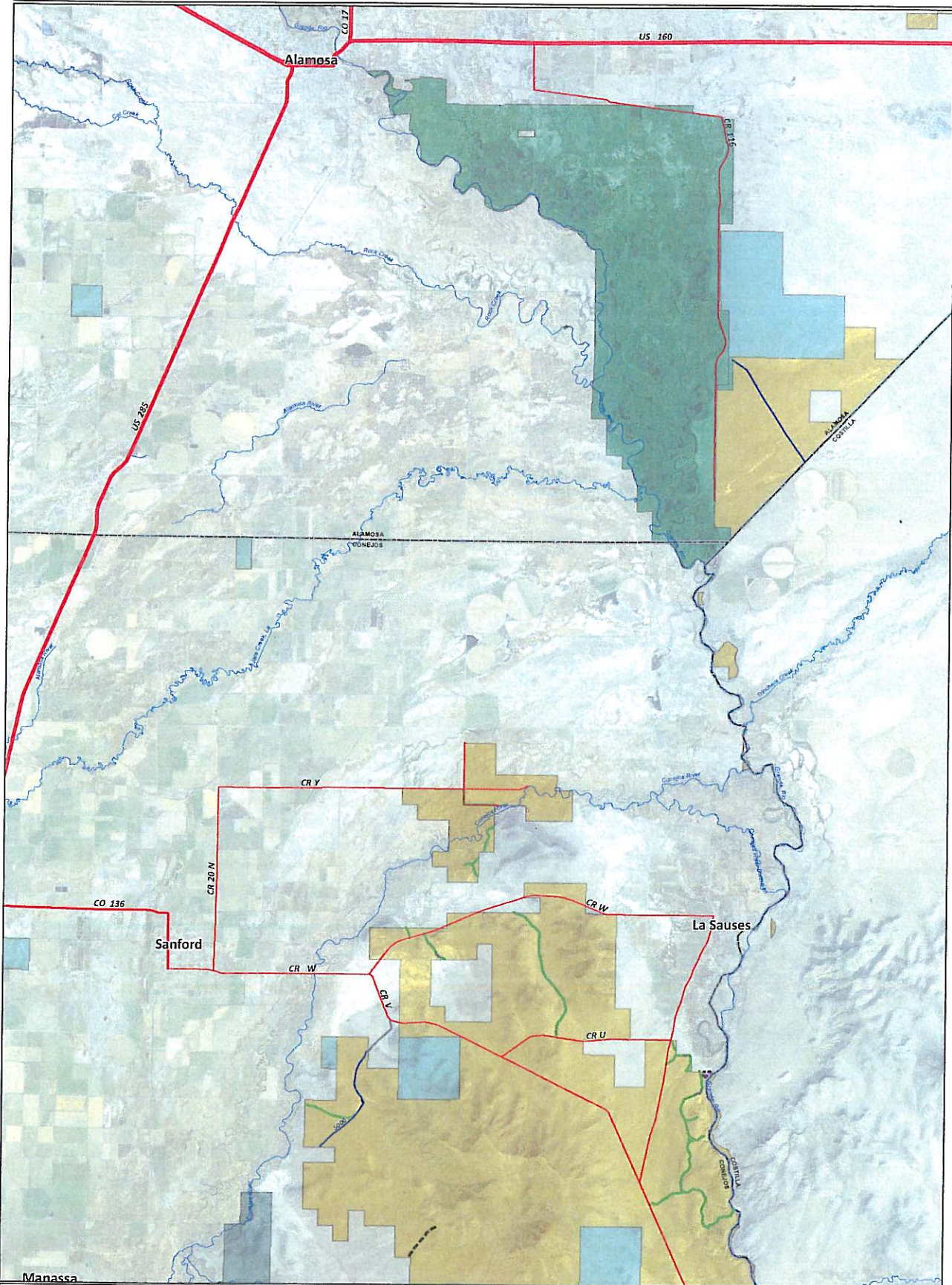
-  Rio Grande Banks Buffered 1/4 Mile
-  Simplified Boundary
-  GCDB Points
-  San Luis Hill WSA Boundary
-  BLM Administred Lands
-  Private
-  State
-  US Fish and Wildlife Service





Public Access Map Map Q

San Luis Valley Bureau of Land Management Travel Management Plan - Route Designations



| | | | |
|----------------------|---------------------------------------|-------------------------------|---|
| Open Motorized Road | Stream (National Hydrography Dataset) | US Fish and Wildlife Service | US Highway |
| Motorized Use Trail | BLM Administered Lands | State | CO Highway |
| Mechanized Use Trail | Rio Grande National Forest | Colorado Division of Wildlife | County Road |
| Foot & Horse Trail | National Park Service | County Boundary | Connecting Route - BLM cannot guarantee public access on these routes |
| Non-BLM Road | | | |

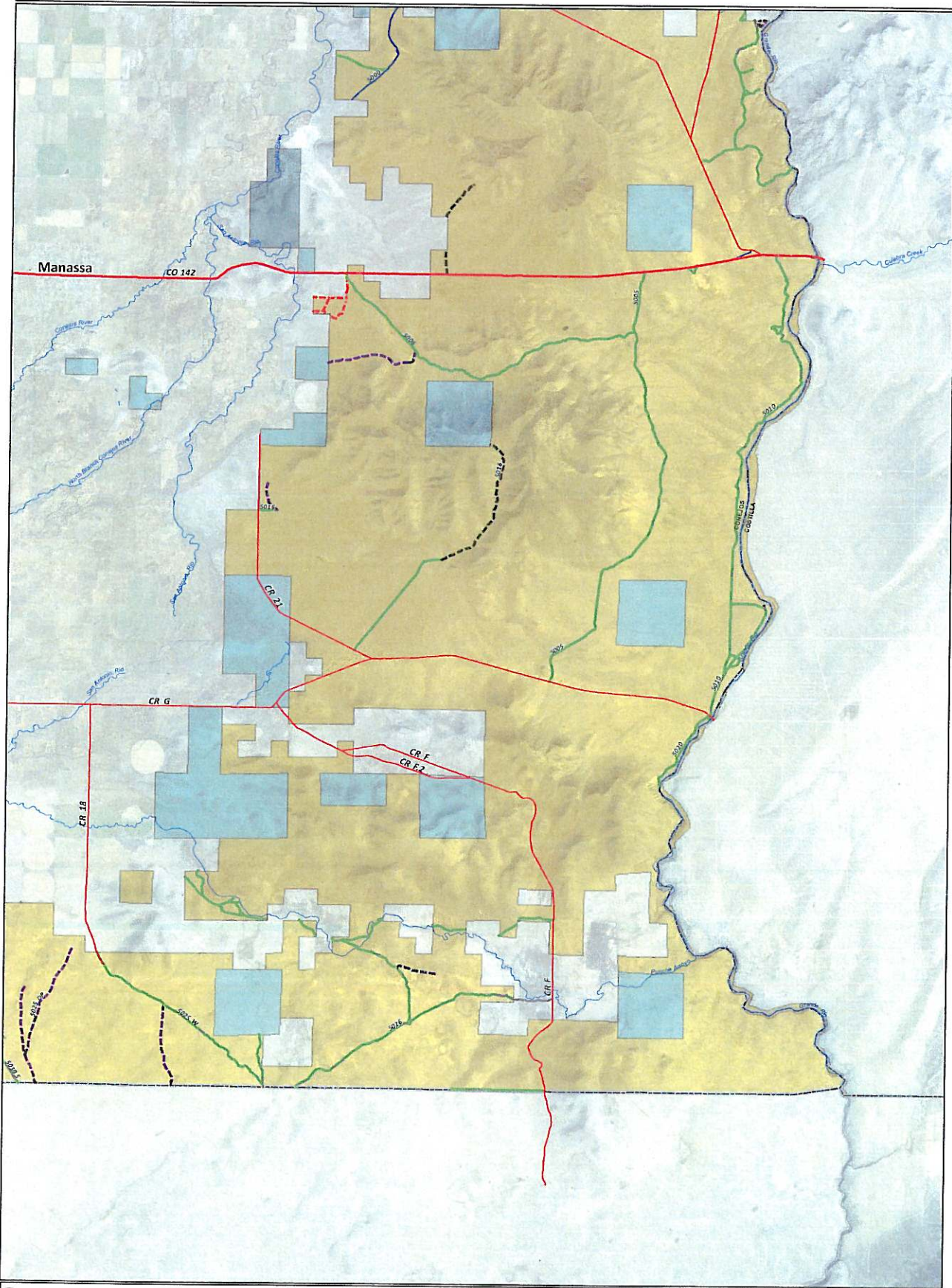
Map Scale
1:91,777
1 inch = 1.4 miles

Map Disclaimer - Although the data presented within this map, and the map itself, have been processed successfully on computers of BLM, no warranty, expressed or implied, is made by BLM regarding the use of this map or the data represented, nor does the fact of distribution constitute or imply any such warranty.
 Map Created 09/10/2009 by D. Simon



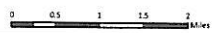
Public Access Map Map T

San Luis Valley Bureau of Land Management Travel Management Plan - Route Designations



| | | | |
|----------------------|---------------------------------------|-------------------------------|---|
| Open Motorized Road | Stream (National Hydrography Dataset) | US Fish and Wildlife Service | US Highway |
| Motorized Use Trail | BLM Administered Lands | State | CO Highway |
| Mechanized Use Trail | Rio Grande National Forest | Colorado Division of Wildlife | County Road |
| Foot & Horse Trail | National Park Service | County Boundary | Connecting Route - BLM cannot guarantee public access on these routes |
| Non-BLM Road | | | |

Map Scale
1:86,339
1 inch = 1.4 miles



Map Disclaimer - Although the data presented within this map, and the map itself, have been processed successfully on computers of BLM, no warranty, expressed or implied, is made by BLM regarding the use of this map or the data represented, nor does the fact of distribution constitute or imply any such warranty.

Map Created 09/10/2009 by D. Simon