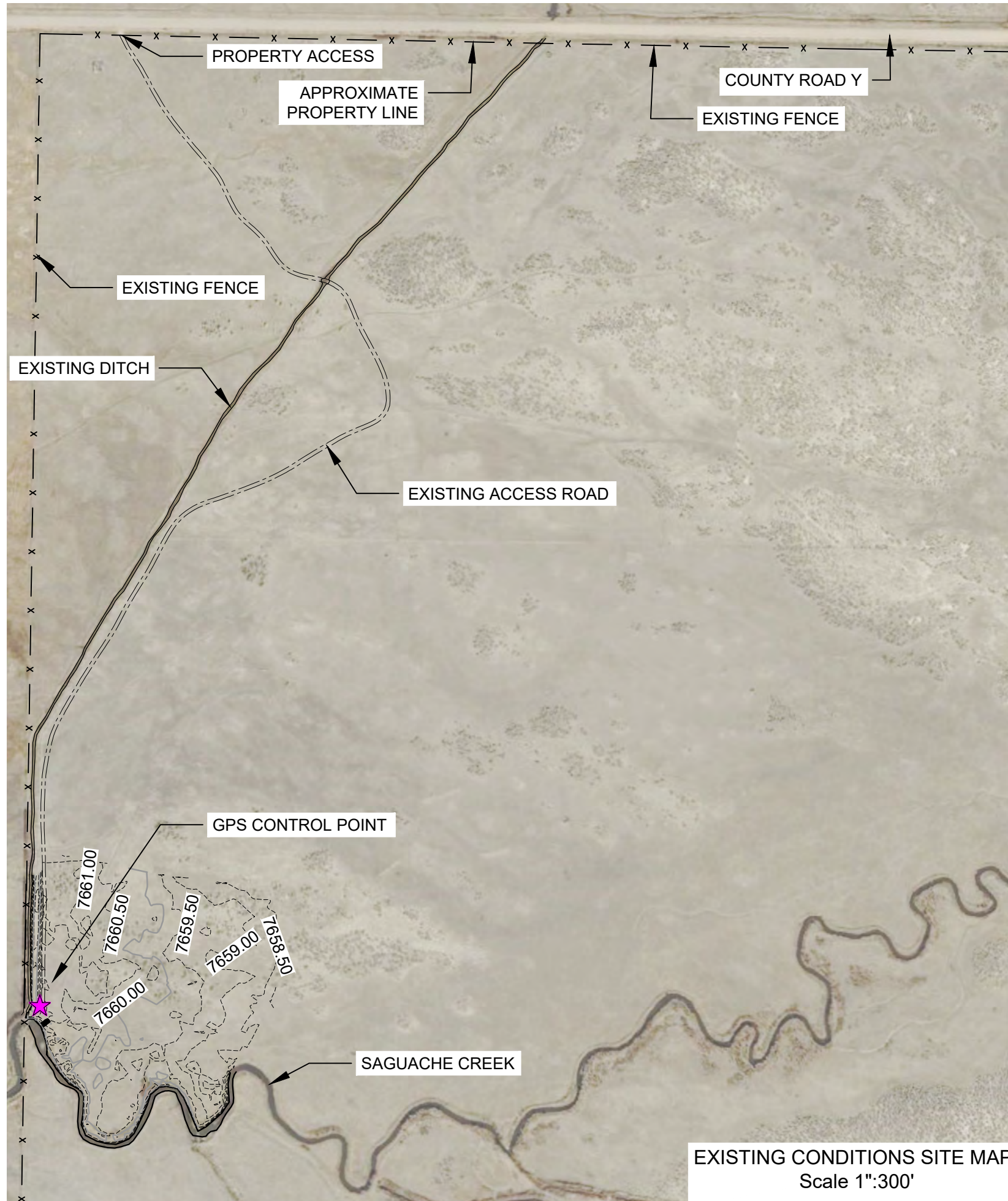




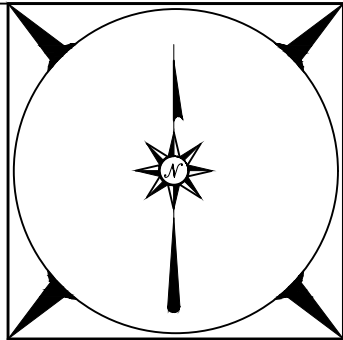


**LEGEND**

- 2.5' CONTOUR INDEX
- 0.5' CONTOUR
- x - APPROXIMATE PROPERTY LINE
- ★ GPS CONTROL POINT



**EXISTING CONDITIONS SITE MAP**  
Scale 1":300'



**DAVIS ENGINEERING SERVICE, INC.**

SINCE 1948

**DES**

DESIGNED BY	CHECKED BY	DATE	APPROVED BY	DATE
CMP/WSS	AS NOTED	3/23/26	CMP	
WSS				

THIS DRAWING IS THE PROPERTY OF DAVIS ENGINEERING SERVICE, INC. AND IS NOT TO BE REPRODUCED, COPIED, OR TRANSMITTED IN ANY FORM OR BY ANY MEANS, WITHOUT THE WRITTEN APPROVAL OF DAVIS ENGINEERING SERVICE, INC.


DAVIS ENGINEERING SERVICE, INC.  
 1000 ALAMOSA AVENUE, SUITE 100  
 ALAMOSA, COLORADO 81101  
 PHONE: (719) 589-3004  
 FAX: (719) 589-1712

ELEVATION BASE ASSUMED



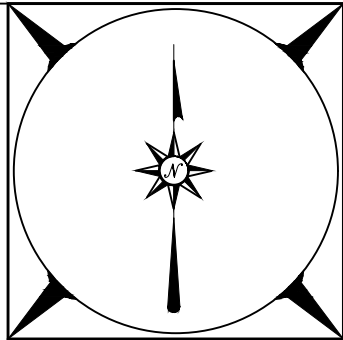
CLIENT Special Improvement District No. 5 8805 Independence Way Alamosa, CO 81101	PROJECT 2026 Augmentation Pipelines Pipeline A Existing Conditions Map	DRAWING NO. E02068 SHEET NO. Sheet 3 of 24
--	---	---

**LEGEND**

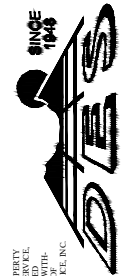
- — — — EDGE OF EXISTING ACCESS ROAD
- - - - - PROPOSED DISCHARGE PIPELINE
-  RIPRAP DISCHARGE DITCH
- 2.5' CONTOUR INDEX
- 0.5' CONTOUR
- x — APPROXIMATE PROPERTY LINE
- ⊙ PROPOSED AUGMENTATION WELL
- ★ GPS CONTROL POINT



**PROPOSED CONSTRUCTION  
SITE MAP  
Scale 1":300'**

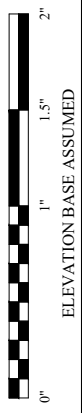


**DAVIS ENGINEERING SERVICE, INC.**



THIS DRAWING IS THE PROPERTY OF DAVIS ENGINEERING SERVICE, INC. AND IS NOT TO BE REPRODUCED, COPIED, OR TRANSMITTED IN ANY FORM OR BY ANY MEANS, WITHOUT THE WRITTEN APPROVAL OF DAVIS ENGINEERING SERVICE, INC.

PROJECT	CHECKED	DATE	BY
CMP/WSS	AS NOTED	3/23/26	
WSS	CMP		
REV.	DATE	BY	APP'D.



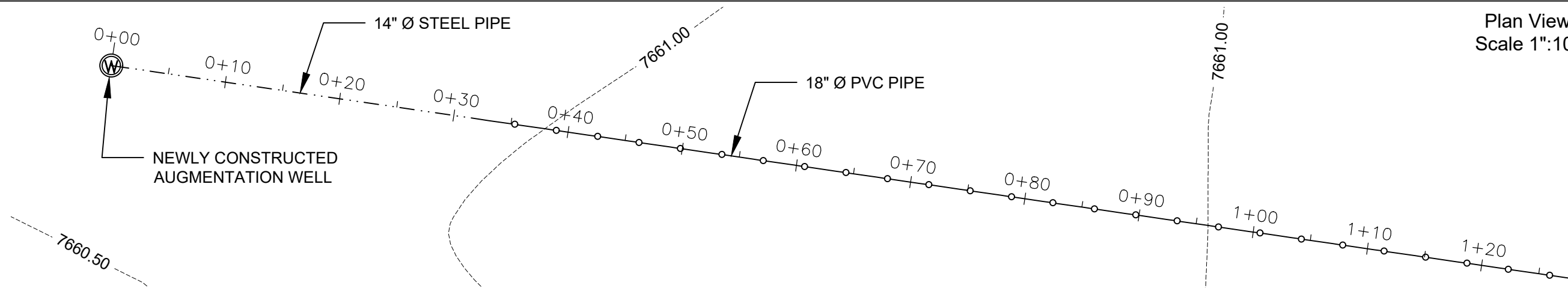
CLIENT  
Special Improvement District No. 5  
8805 Independence Way  
Alamosa, CO 81101

2026 Augmentation Pipelines  
Pipeline A  
Proposed Construction Map

E02068

Sheet 4 of 24

Plan View  
Scale 1":10'

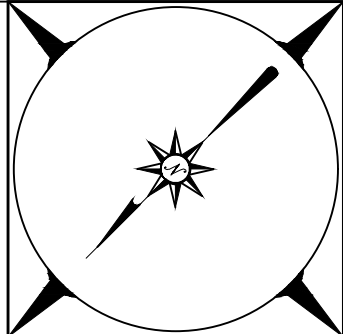
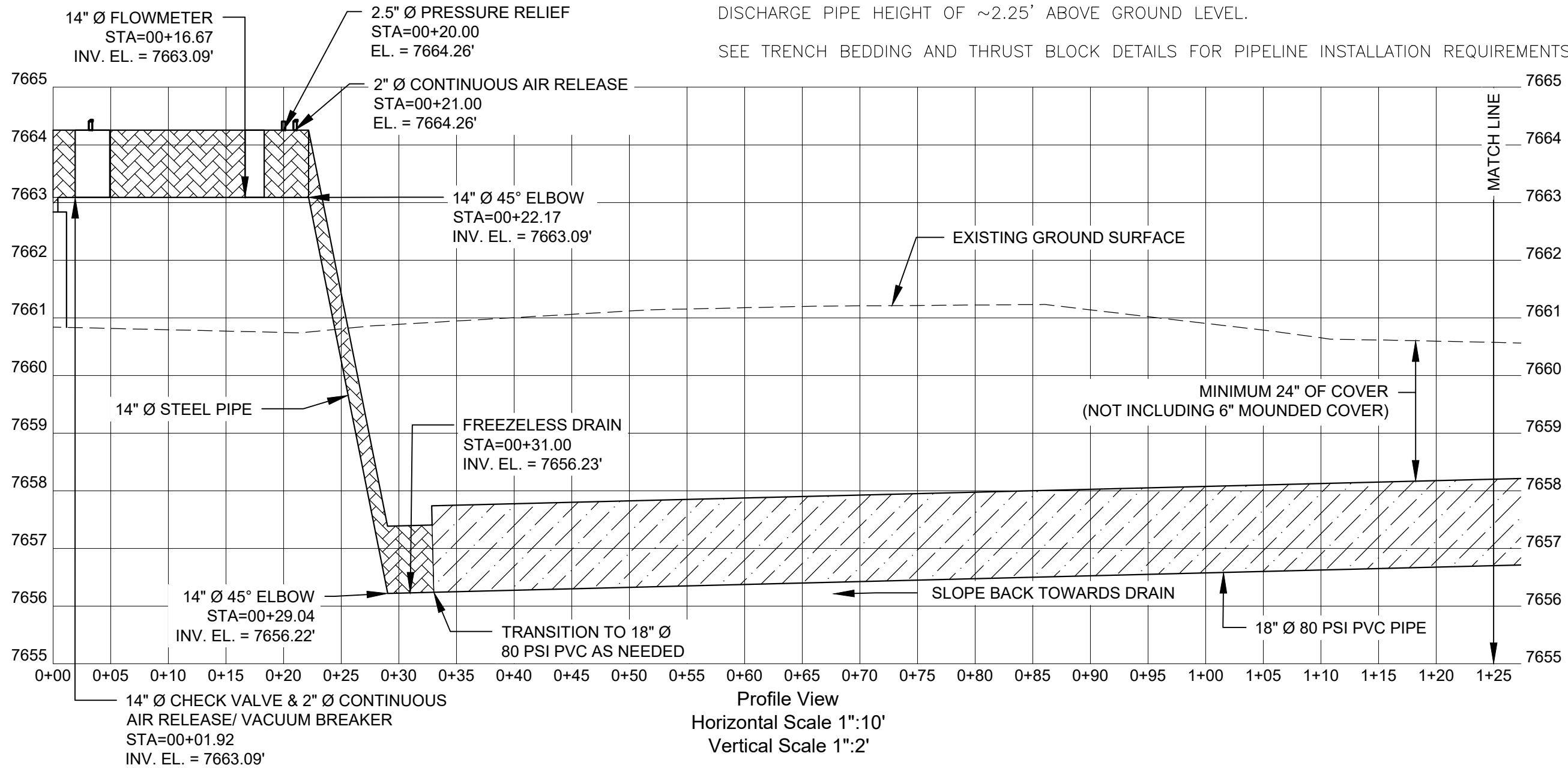


**LEGEND**

- 14" Ø WELDED STEEL PIPE
- 2.5' CONTOUR INDEX
- 18" Ø PVC PIPE
- 0.5' CONTOUR

**NOTE:**

THE ABOVE GROUND COMPONENT ELEVATIONS ON THIS SHEET ARE BASED ON A WELL DISCHARGE PIPE HEIGHT OF ~2.25' ABOVE GROUND LEVEL.  
SEE TRENCH BEDDING AND THRUST BLOCK DETAILS FOR PIPELINE INSTALLATION REQUIREMENTS.



**DAVIS ENGINEERING SERVICE, INC.**



PROJECT	DATE	BY	DATE
CHECKED	DATE	BY	DATE
APPROVED	DATE	BY	DATE
DATE	DATE	DATE	DATE

THIS DRAWING IS THE PROPERTY OF DAVIS ENGINEERING SERVICE, INC. AND IS NOT TO BE REPRODUCED OR TRANSMITTED IN ANY FORM OR BY ANY MEANS, ELECTRONIC OR MECHANICAL, WITHOUT THE WRITTEN APPROVAL OF DAVIS ENGINEERING SERVICE, INC.



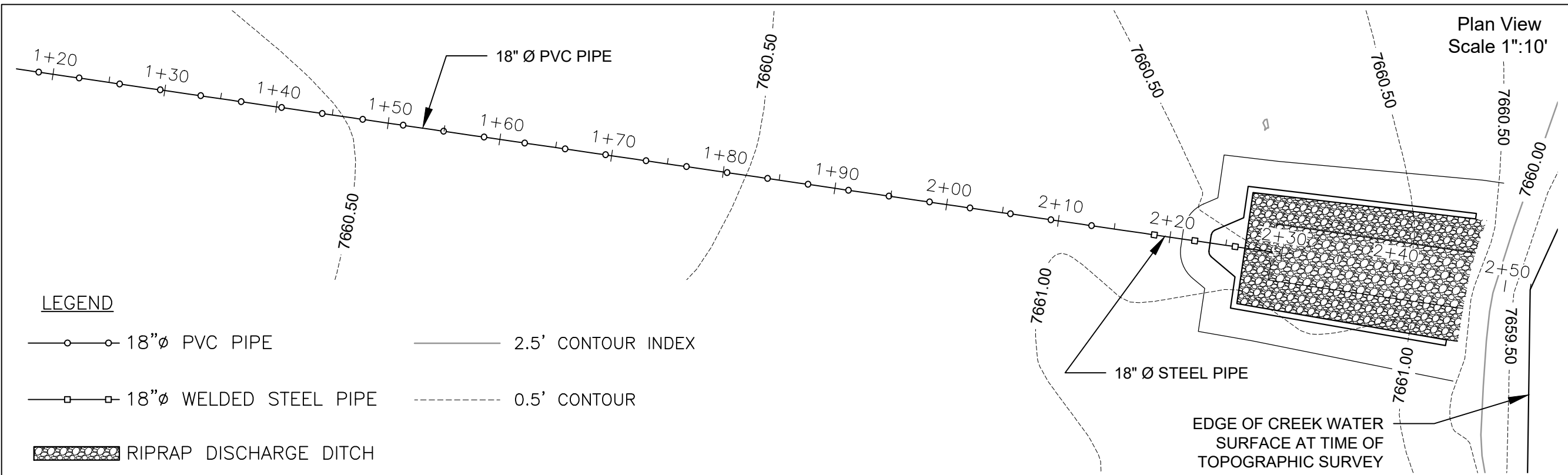
Special Improvement District No. 5  
8805 Independence Way  
Alamosa, CO 81101

2026 Augmentation Pipelines

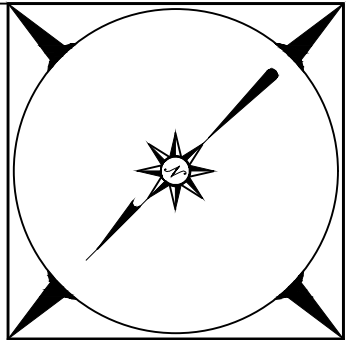
Pipeline A  
Plan & Profile 1

E02068

Sheet 5 of 24



- LEGEND**
- 18"Ø PVC PIPE
  - 18"Ø WELDED STEEL PIPE
  - ▨ RIPRAP DISCHARGE DITCH
  - 2.5' CONTOUR INDEX
  - - - 0.5' CONTOUR



**DAVIS ENGINEERING SERVICE, INC.**

**DAVIS ENGINEERING SERVICE, INC.**

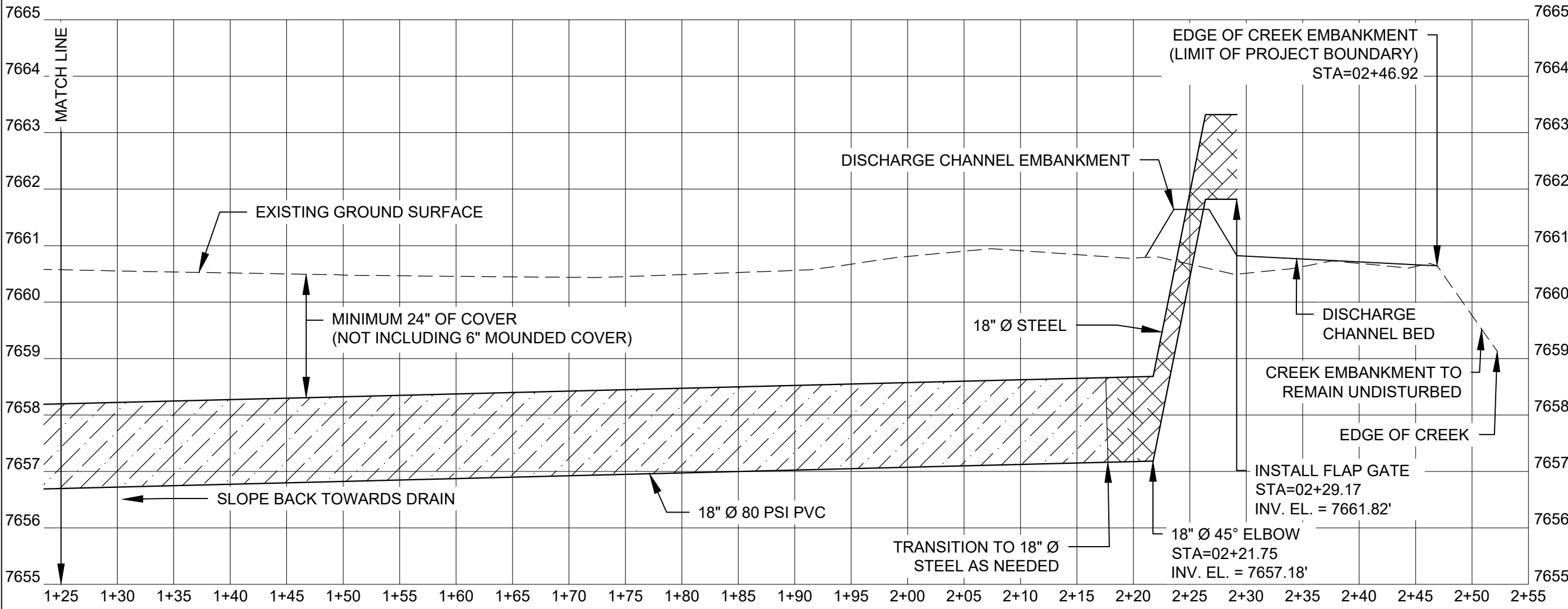
1944

**DES**

THIS DRAWING IS THE PROPERTY OF DAVIS ENGINEERING SERVICE, INC. AND IS NOT TO BE LOANED, REPRODUCED, COPIED, OR IN ANY MANNER DISSEMINATED WITHOUT THE WRITTEN APPROVAL OF DAVIS ENGINEERING SERVICE, INC.

DESIGNED BY	AS NOTED	DATE	3/23/26
CHECKED BY	CMP	DATE	
APPROVED BY	WSS	DATE	
DATE		BY	
REV.			

ELEVATION BASE ASSUMED



**Profile View**  
Horizontal Scale 1":10'  
Vertical Scale 1":2'

**NOTE:**  
SEE TRENCH BEDDING AND THRUST BLOCK DETAILS FOR PIPELINE INSTALLATION REQUIREMENTS.

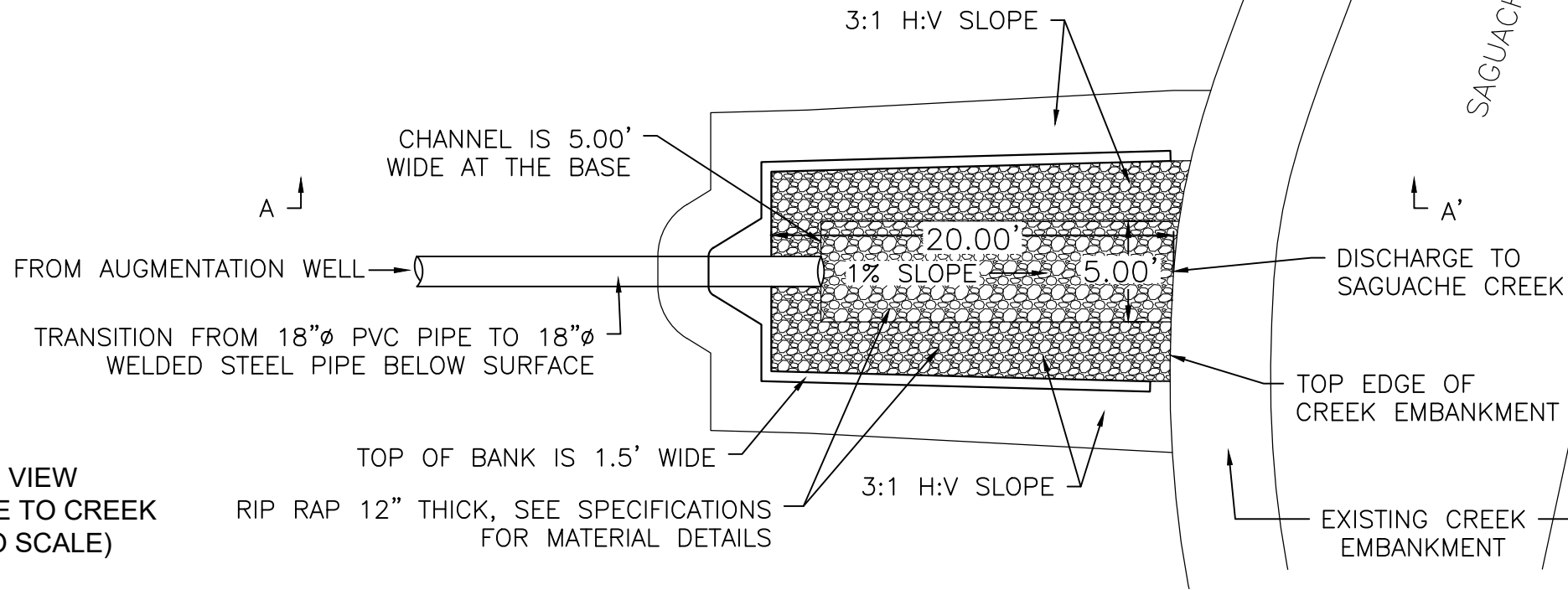


Special Improvement District No. 5  
8805 Independence Way  
Alamosa, CO 81101

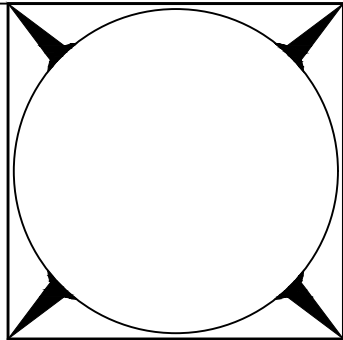
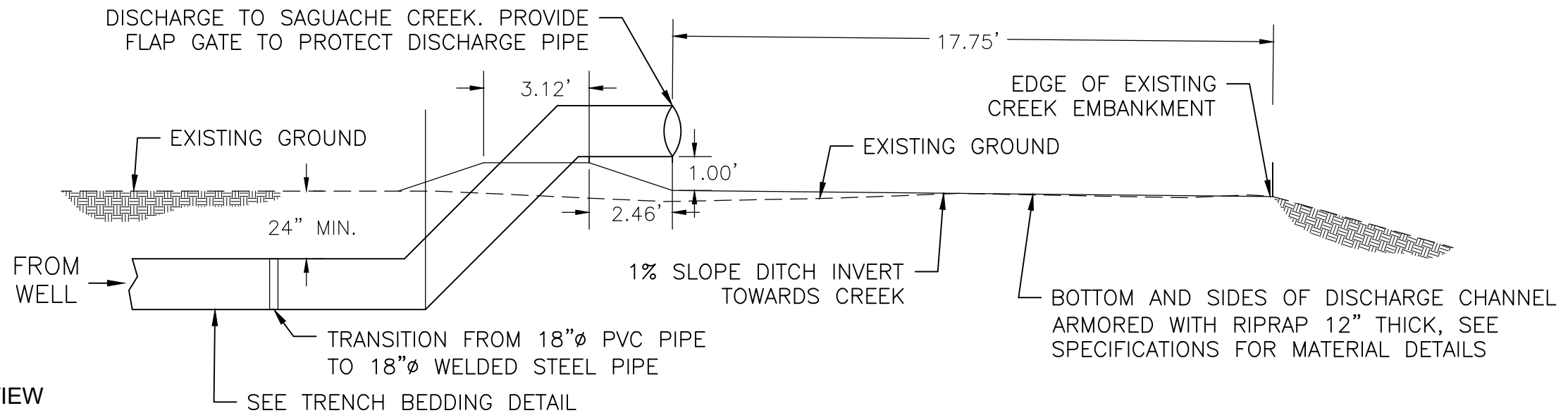
2026 Augmentation Pipelines

Pipeline A  
Plan & Profile 2

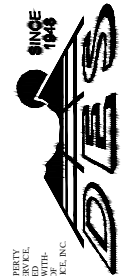
**PLAN VIEW  
DISCHARGE TO CREEK  
(NOT TO SCALE)**



**SECTION VIEW  
DISCHARGE TO CREEK (A - A')  
(NOT TO SCALE)**

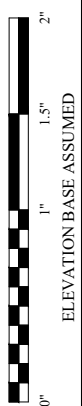


**DAVIS ENGINEERING SERVICE, INC.**



THIS DRAWING IS THE PROPERTY OF DAVIS ENGINEERING SERVICE, INC. AND IS NOT TO BE REPRODUCED, COPIED, OR TRANSMITTED IN ANY FORM OR BY ANY MEANS, WITHOUT THE WRITTEN APPROVAL OF DAVIS ENGINEERING SERVICE, INC.

PROJECT	AS NOTED	DATE	3/23/26
CHECKED	CMP	DATE	
DESIGNED	WSS	DATE	
APPROVED	CMP	DATE	



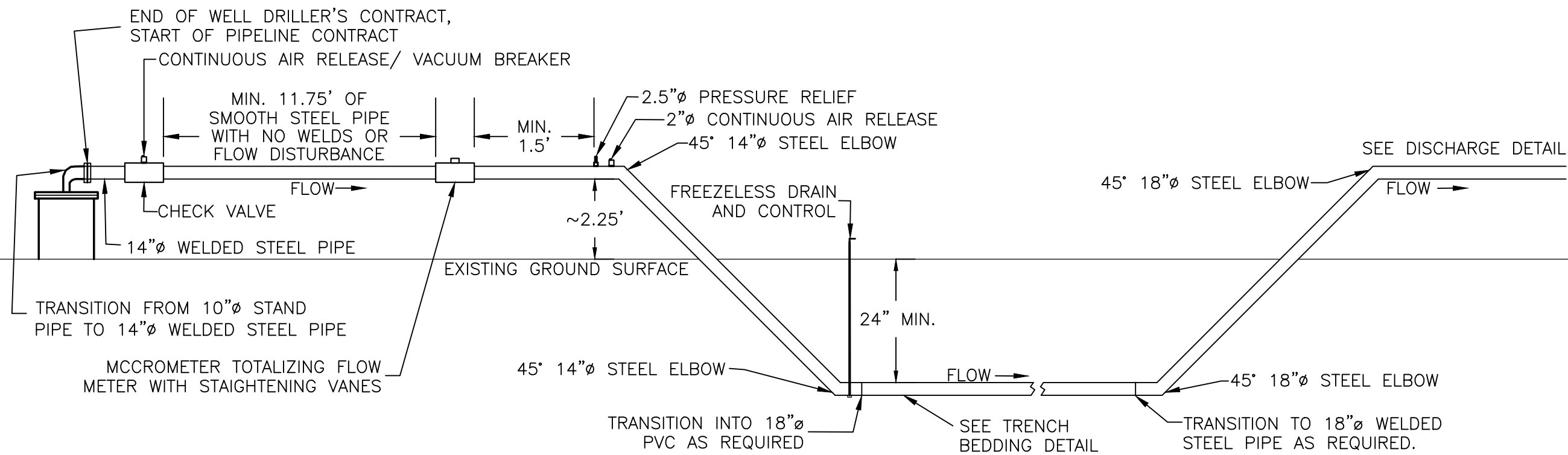
Special Improvement District No. 5  
8805 Independence Way  
Alamosa, CO 81101

2026 Augmentation Pipelines

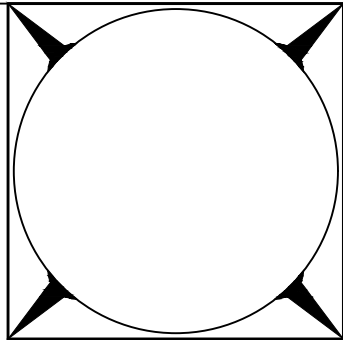
Pipeline A  
Detail Sheet 1

E02068

Sheet 7 of 24



**AUGMENTATION PIPELINE A  
SUBSURFACE DETAIL  
(NOT TO SCALE)**

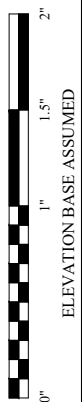


**DAVIS ENGINEERING SERVICE, INC.**



THIS DRAWING IS THE PROPERTY OF DAVIS ENGINEERING SERVICE, INC. AND IS NOT TO BE REPRODUCED, COPIED, OR TRANSMITTED IN ANY FORM OR BY ANY MEANS, WITHOUT THE WRITTEN APPROVAL OF DAVIS ENGINEERING SERVICE, INC.

PROJECT	AS NOTED	DATE	3/23/26
DESIGNED	CMP	APPROVED	CMP
CHECKED			
DATE			
BY			
DATE			



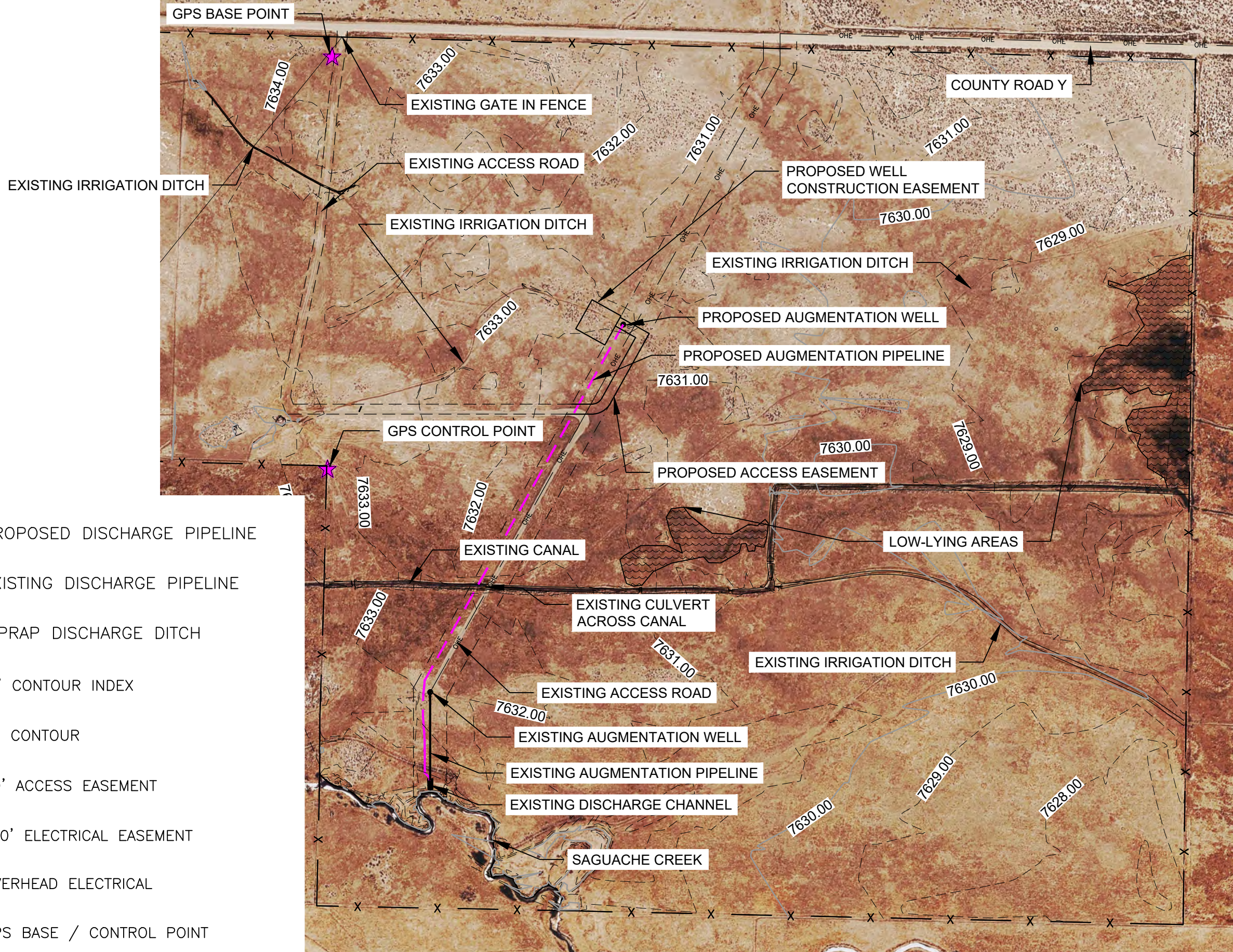
Special Improvement District No. 5  
8805 Independence Way  
Alamosa, CO 81101

2026 Augmentation Pipelines

Pipeline A  
Detail Sheet 2

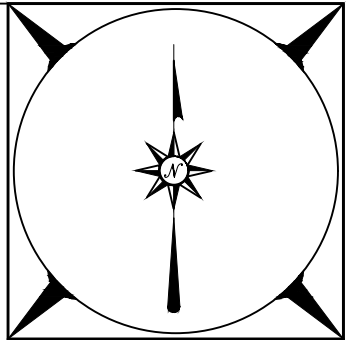
E02068





- PROPOSED DISCHARGE PIPELINE
- EXISTING DISCHARGE PIPELINE
- RIPRAP DISCHARGE DITCH
- 5' CONTOUR INDEX
- 1' CONTOUR
- 30' ACCESS EASEMENT
- 100' ELECTRICAL EASEMENT
- OVERHEAD ELECTRICAL
- GPS BASE / CONTROL POINT

**PROPOSED CONSTRUCTION SITE MAP**  
Scale 1":300'



**DAVIS ENGINEERING SERVICE, INC.**

THIS DRAWING IS THE PROPERTY OF DAVIS ENGINEERING SERVICE, INC. AND IS NOT TO BE REPRODUCED, COPIED, OR TRANSMITTED IN ANY FORM OR BY ANY MEANS, WITHOUT THE WRITTEN APPROVAL OF DAVIS ENGINEERING SERVICE, INC.

PROJECT	CHECKED	DATE
CMP/WSS	AS NOTED	3/23/26
WSS	CMP	

DAVIS ENGINEERING SERVICE, INC.  
1448 S. ALAMOSA AVENUE  
ALAMOSA, COLORADO 81101  
PHONE: (719) 889-3000  
FAX: (719) 889-1272

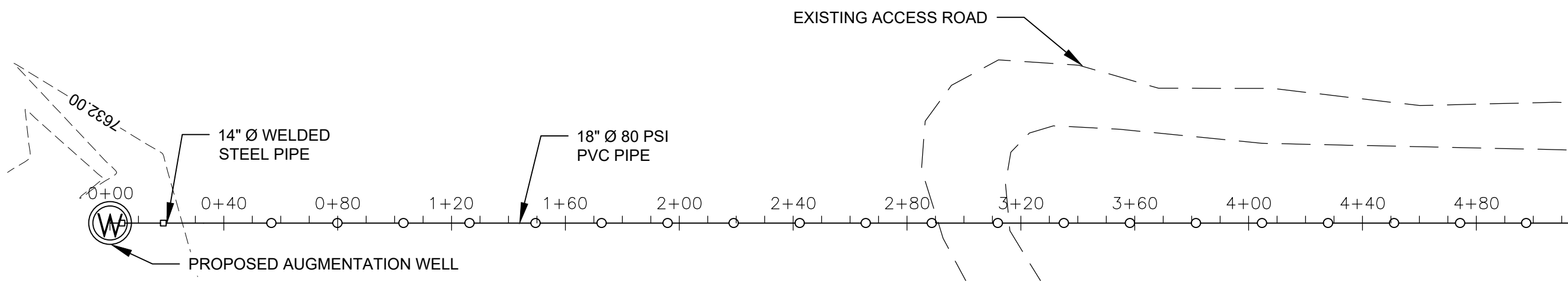
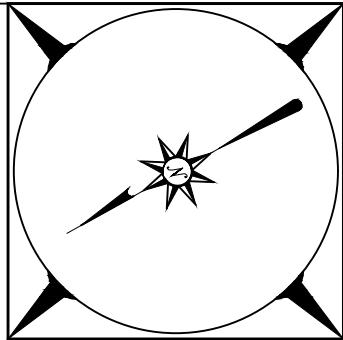
ELEVATION BASE ASSUMED



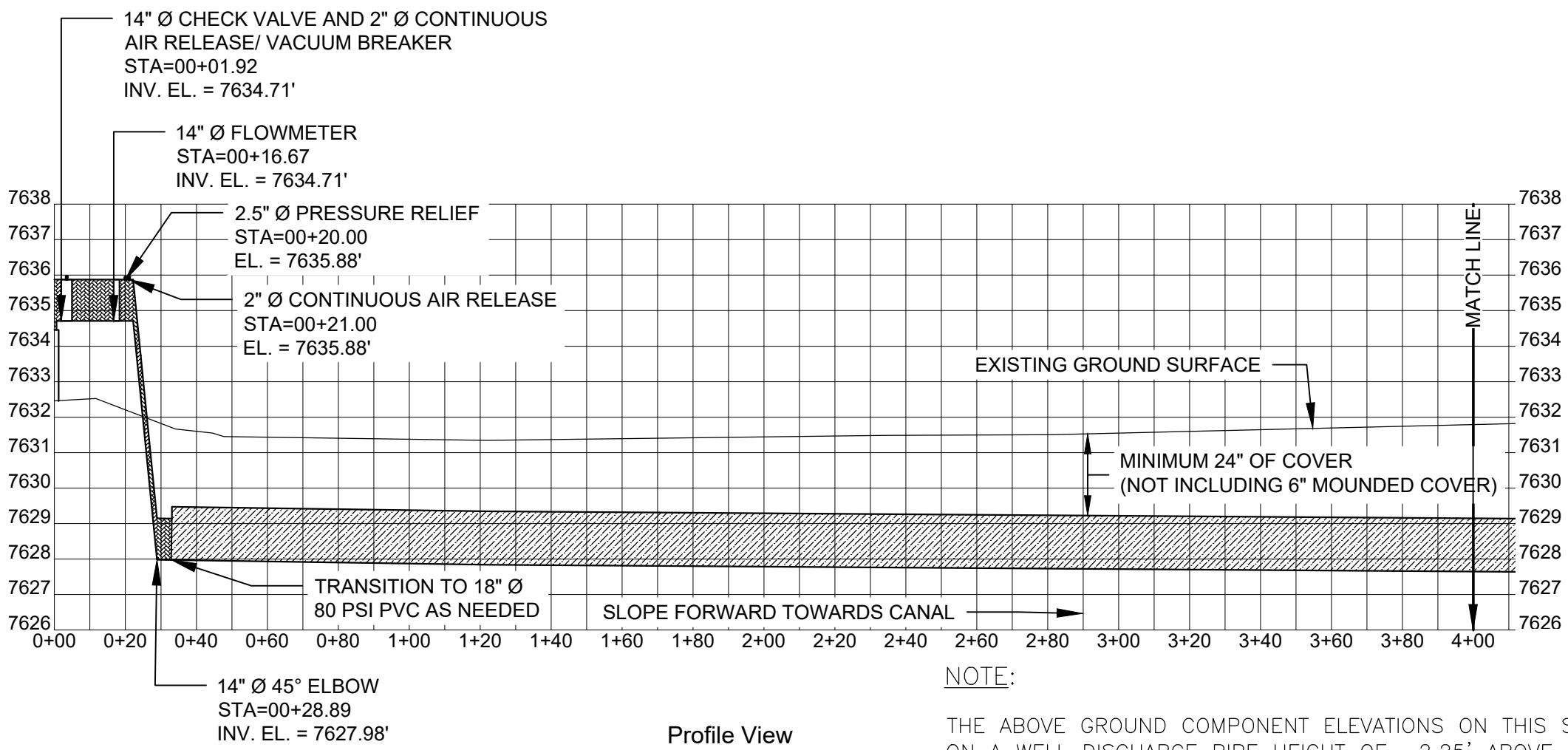
CLIENT	Special Improvement District No. 5 8805 Independence Way Alamosa, CO 81101
PROJECT	2026 Augmentation Pipelines
SHEET	Pipeline B Proposed Construction Map
NO. / DATE	E02068
REV.	Sheet 10 of 24

**LEGEND**

- 14"Ø WELDED STEEL PIPE
- 18"Ø PVC PIPE
- 2.5' CONTOUR INDEX
- - - - 0.5' CONTOUR



Plan View  
Scale 1":40'

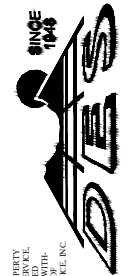


Profile View  
Horizontal Scale 1":40'  
Vertical Scale 1":4'

**NOTE:**

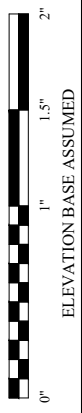
THE ABOVE GROUND COMPONENT ELEVATIONS ON THIS SHEET ARE BASED ON A WELL DISCHARGE PIPE HEIGHT OF ~2.25' ABOVE GROUND LEVEL.  
SEE TRENCH BEDDING AND THRUST BLOCK DETAILS FOR PIPELINE INSTALLATION REQUIREMENTS.

**DAVIS ENGINEERING SERVICE, INC.**



THIS DRAWING IS THE PROPERTY OF DAVIS ENGINEERING SERVICE, INC. AND IS NOT TO BE REPRODUCED, COPIED, OR TRANSMITTED IN ANY FORM OR BY ANY MEANS, WITHOUT THE WRITTEN APPROVAL OF DAVIS ENGINEERING SERVICE, INC.

PROJECT	AS NOTED	DATE	3/23/26
CHECKED	CMP	APPROVED	CMP
DESIGNED	WSS	DATE	
DRAWN		BY	
REV.		DATE	



Special Improvement District No. 5  
8805 Independence Way  
Alamosa, CO 81101

2026 Augmentation Pipelines

Pipeline B  
Plan & Profile 1

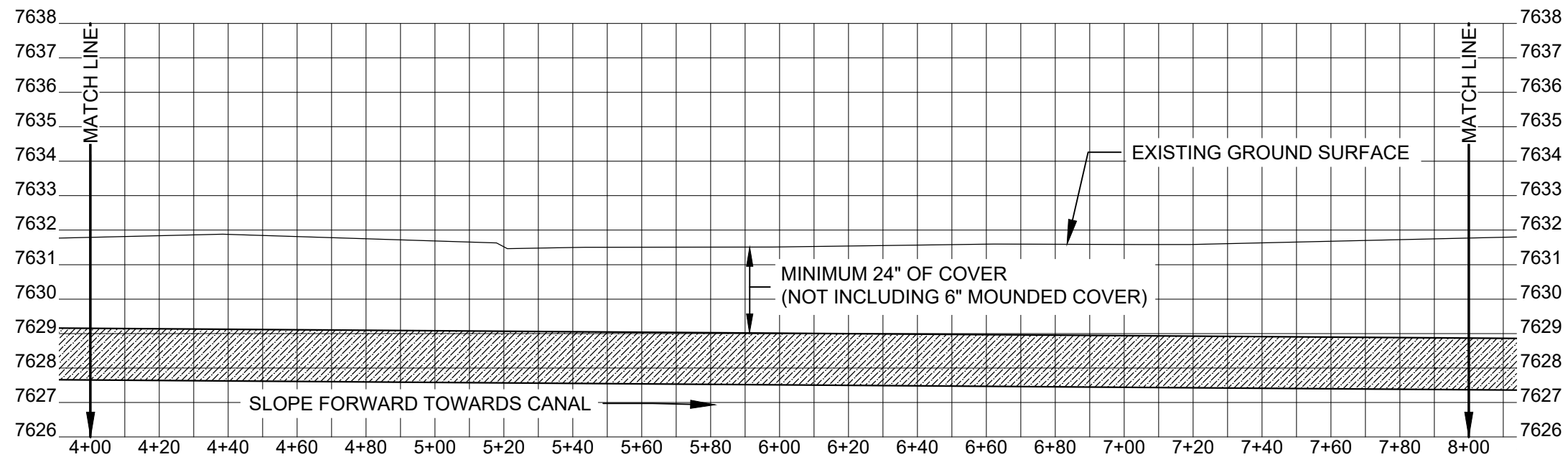
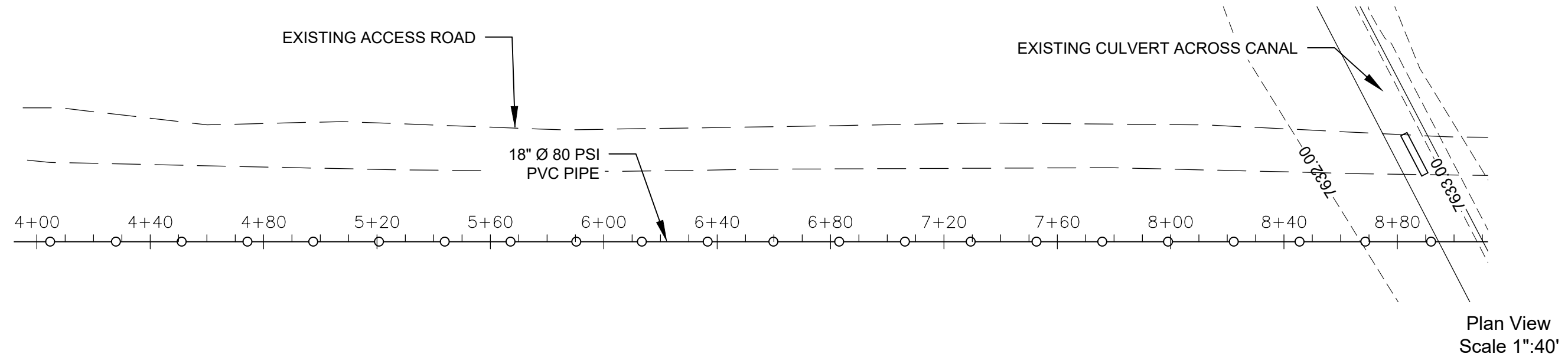
E02068

**LEGEND**

—○—○— 18"Ø PVC PIPE

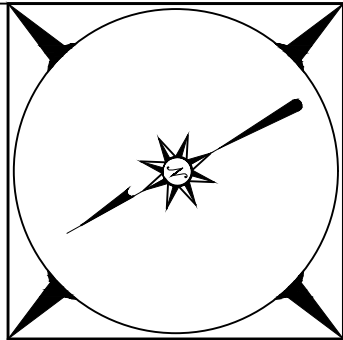
—— 2.5' CONTOUR INDEX

----- 0.5' CONTOUR

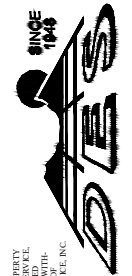


**NOTE:**

SEE TRENCH BEDDING AND THRUST BLOCK DETAILS FOR PIPELINE INSTALLATION REQUIREMENTS.

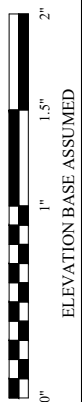


**DAVIS ENGINEERING SERVICE, INC.**



THIS DRAWING IS THE PROPERTY OF DAVIS ENGINEERING SERVICE, INC. AND IS NOT TO BE REPRODUCED, COPIED, OR TRANSMITTED IN ANY FORM OR BY ANY MEANS, WITHOUT THE WRITTEN APPROVAL OF DAVIS ENGINEERING SERVICE, INC.

DATE	AS NOTED	DATE	3/23/26
CHECKED	AS NOTED	DATE	3/23/26
DESIGNED	AS NOTED	DATE	3/23/26
DRAWN	AS NOTED	DATE	3/23/26
APPROVED	AS NOTED	DATE	3/23/26
CMP	AS NOTED	DATE	3/23/26
WSS	AS NOTED	DATE	3/23/26
DATE	BY	DATE	BY

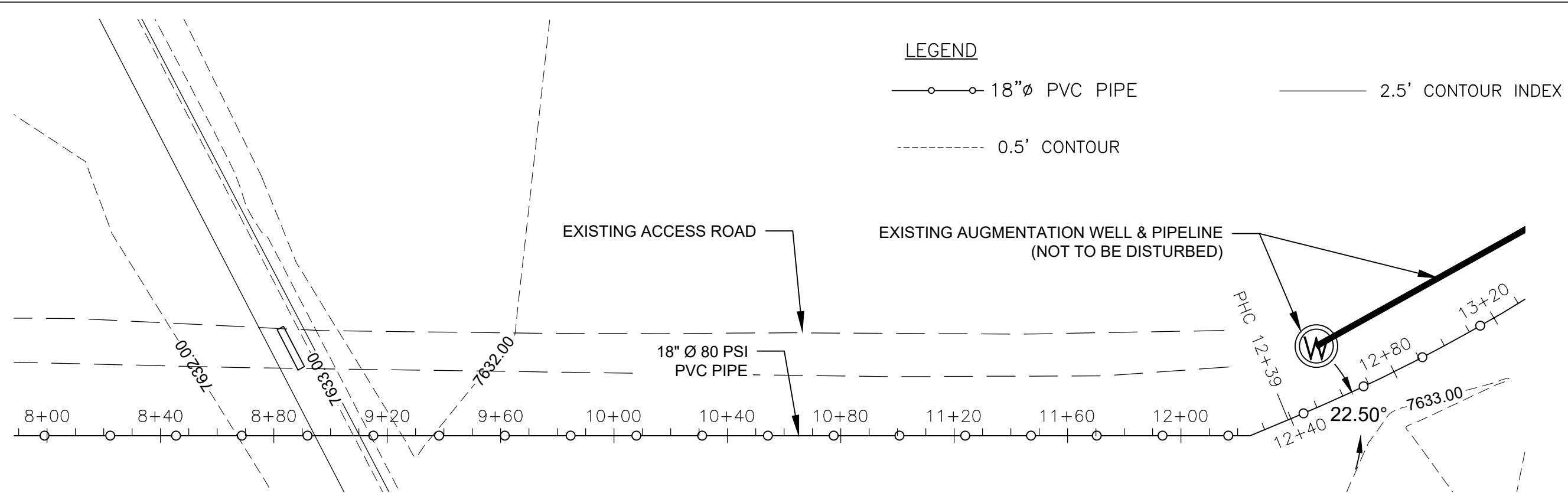


CLIENT  
Special Improvement District No. 5  
8805 Independence Way  
Alamosa, CO 81101

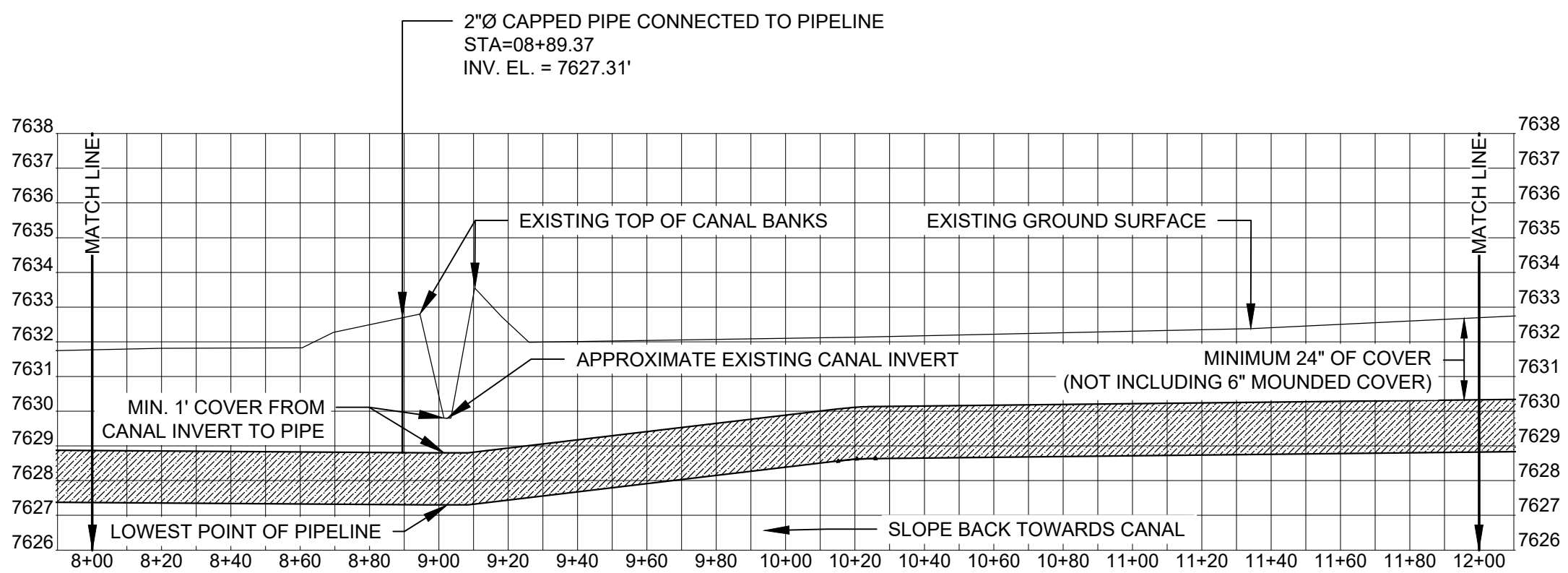
2026 Augmentation Pipelines

Pipeline B  
Plan & Profile 2

E02068

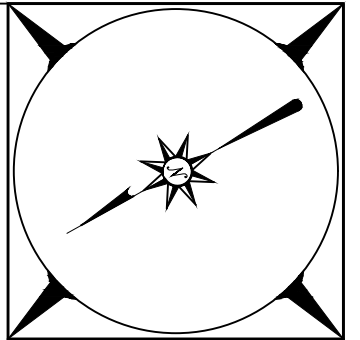


Plan View  
Scale 1":40'



Profile View  
Horizontal Scale 1":40'  
Vertical Scale 1":4'

**NOTE:**  
DUE TO THE POTENTIAL FOR HIGH GROUND WATER, AND TO MINIMIZE PIPE DEPTH, A PUMP WILL BE UTILIZED TO DRAIN THE AUGMENTATION PIPELINE AT THE END OF EACH SEASON. PUMPING WILL OCCUR FROM THE LOW POINT WHERE THE PIPELINE CROSSES UNDER THE CANAL. ACCESS WILL BE PROVIDED VIA A 2"Ø PORT TO BE INSTALLED ADJACENT TO THE CANAL WITH A CAP. METAL T-POSTS WILL MARK THE PORT LOCATION



**DAVIS ENGINEERING SERVICE, INC.**

1944  
**DES**

THIS DRAWING IS THE PROPERTY OF DAVIS ENGINEERING SERVICE, INC. AND IS NOT TO BE REPRODUCED, COPIED, OR TRANSMITTED IN ANY FORM OR BY ANY MEANS, WITHOUT THE WRITTEN APPROVAL OF DAVIS ENGINEERING SERVICE, INC.

DESIGNED BY	DATE	APPROVED BY	DATE
CHECKED BY	DATE	APPROVED BY	DATE
PROJECT NO.	DATE	PROJECT NO.	DATE
PROJECT NAME	DATE	PROJECT NAME	DATE

DAVIS ENGINEERING SERVICE, INC.  
1000 ALAMOSA AVENUE  
ALAMOSA, COLORADO 81101  
PHONE: (719) 589-3000  
FAX: (719) 589-1712

DATE: 3/23/26  
BY: [Signature]  
DATE: [Blank]  
BY: [Blank]  
DATE: [Blank]  
BY: [Blank]

SCALE: 1" = 40'

ELEVATION BASE ASSUMED



Special Improvement District No. 5  
8805 Independence Way  
Alamosa, CO 81101

2026 Augmentation Pipelines

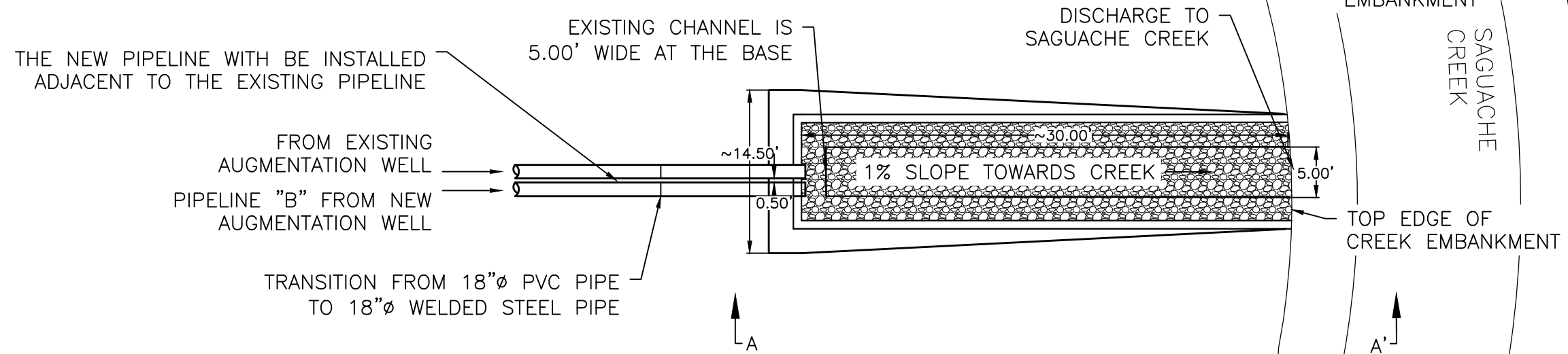
Pipeline B  
Plan & Profile 3

E02068

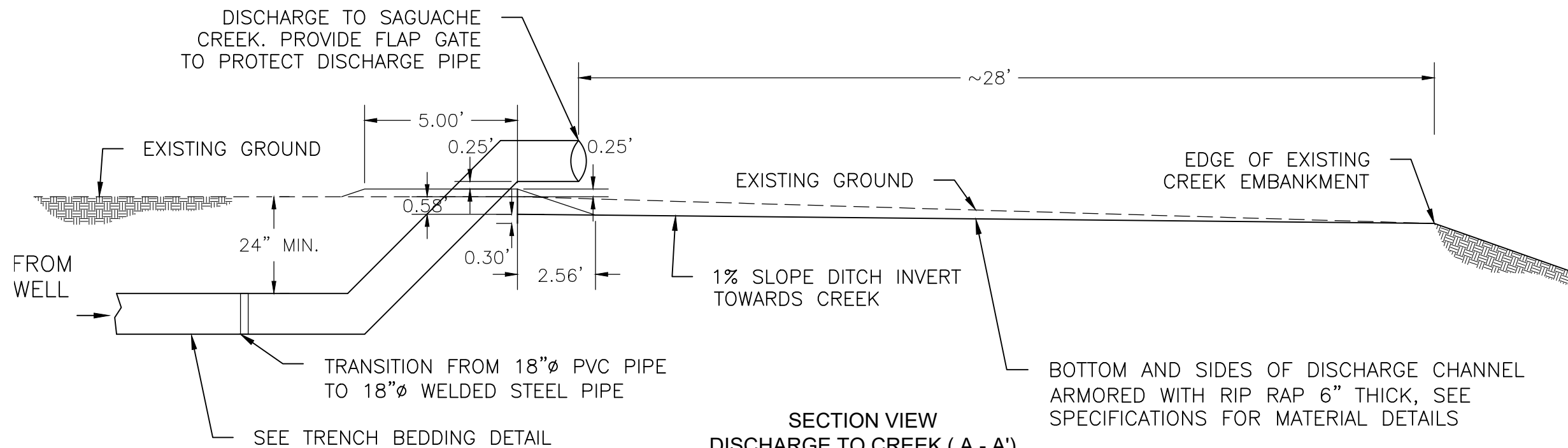
Sheet 13 of 24



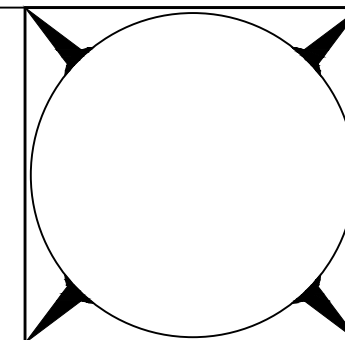




PLAN VIEW  
DISCHARGE TO CREEK  
(NOT TO SCALE)



SECTION VIEW  
DISCHARGE TO CREEK (A - A')  
(NOT TO SCALE)

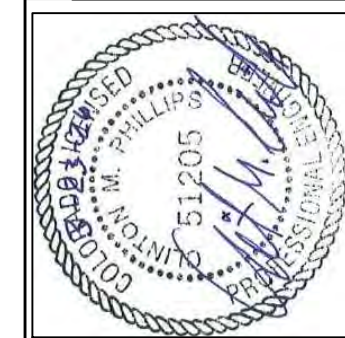
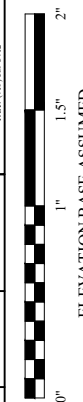


DAVIS ENGINEERING SERVICE, INC.



THIS DRAWING IS THE PROPERTY OF DAVIS ENGINEERING SERVICE, INC. AND IS NOT TO BE REPRODUCED OR TRANSMITTED IN ANY FORM OR BY ANY MEANS, WITHOUT THE WRITTEN APPROVAL OF DAVIS ENGINEERING SERVICE, INC.

PROJECT	AS NOTED	DATE	3/23/26
CHECKED	CMP	APPROVED	CMP
DESIGNED	WSS	DATE	
REV.	BY	DATE	APPROVED



Special Improvement District No. 5  
8805 Independence Way  
Alamosa, CO 81101

2026 Augmentation Pipelines

Pipeline B  
Detail Sheet 2

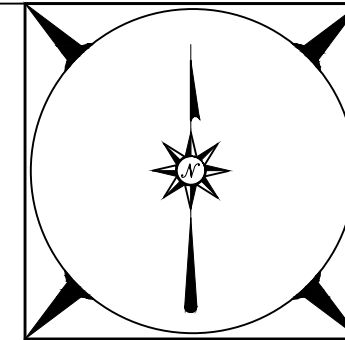
E02068

Sheet 16 of 24



EXISTING CONDITIONS SITE MAP  
Scale 1":100'

- LEGEND**
- 1' CONTOUR
  - ★ GPS BASE / CONTROL POINT
  - x — APPROXIMATE PROPERTY LINE



**DAVIS ENGINEERING SERVICE, INC.**

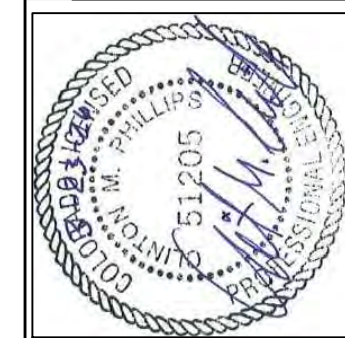
SINCE 1948

ELEVATION BASE ASSUMED

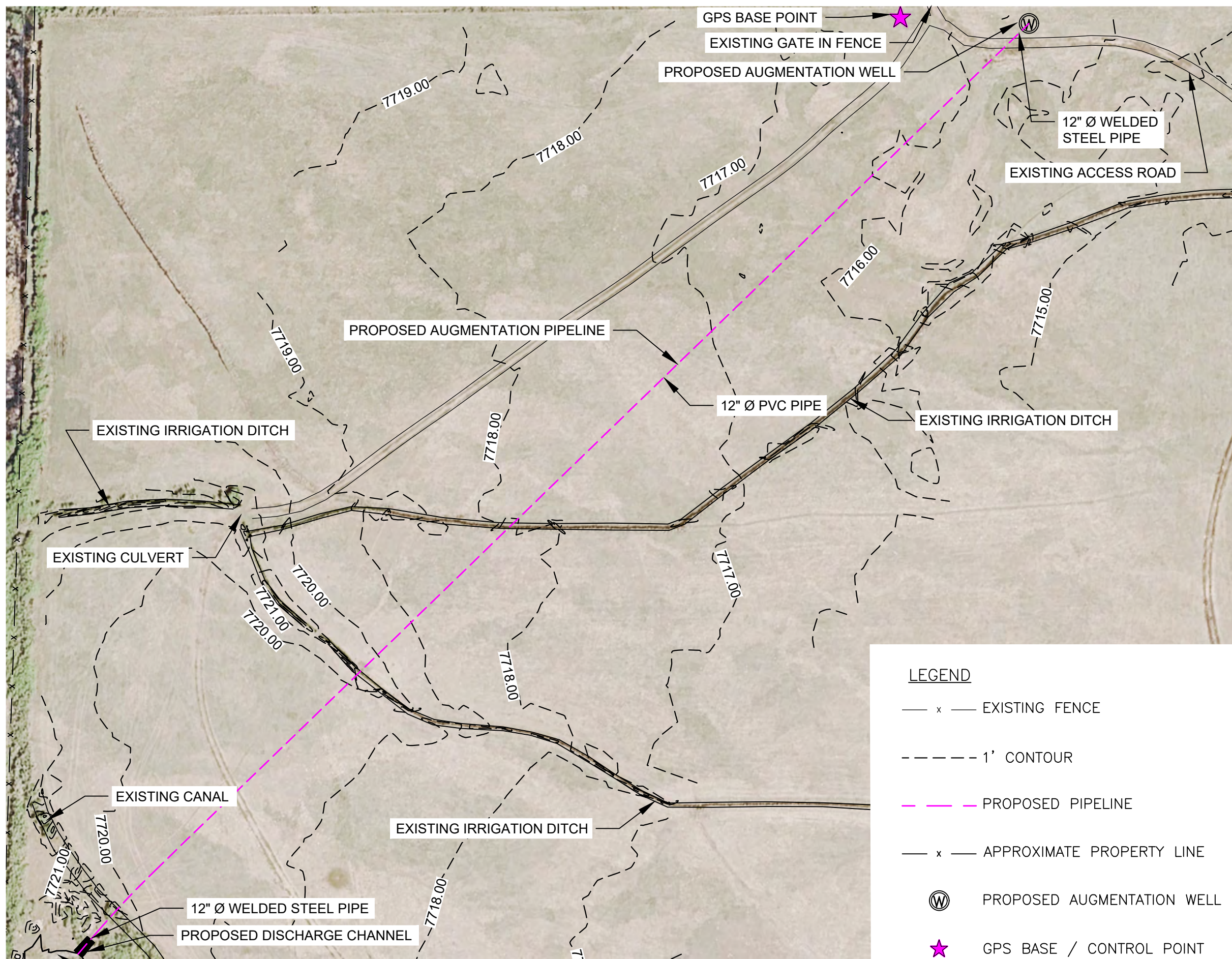
PROJECT	AS NOTED	DATE	3/23/26	
CHECKED	APPROVED	CMP		
DESIGNED	CMP/WSS	WSS		
DATE	BY	APP'D		

THIS DRAWING IS THE PROPERTY OF DAVIS ENGINEERING SERVICE, INC. AND IS NOT TO BE REPRODUCED, COPIED, OR TRANSMITTED IN ANY FORM OR BY ANY MEANS, WITHOUT THE WRITTEN APPROVAL OF DAVIS ENGINEERING SERVICE, INC.

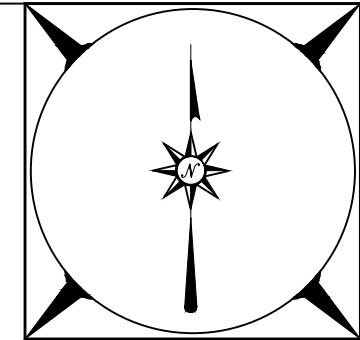
DAVIS ENGINEERING SERVICE, INC.  
1000 W. 10TH AVE., SUITE 100  
ALAMOSA, CO 81101  
PHONE: (719) 589-3000  
FAX: (719) 589-1712



CLIENT Special Improvement District No. 5 8805 Independence Way Alamosa, CO 81101	PROJECT 2026 Augmentation Pipelines Existing Conditions Map	SHEET NO. E02068 SHEET Sheet 17 of 24
--	---	--



PROPOSED CONSTRUCTION SITE MAP  
Scale 1":100'



**DAVIS ENGINEERING SERVICE, INC.**

INCE 1948

THIS DRAWING IS THE PROPERTY OF DAVIS ENGINEERING SERVICE, INC. AND IS NOT TO BE REPRODUCED, COPIED, OR TRANSMITTED IN ANY FORM OR BY ANY MEANS, WITHOUT THE WRITTEN APPROVAL OF DAVIS ENGINEERING SERVICE, INC.

PROJECT	AS NOTED
DATE	3/23/26
DESIGNED BY	CMP
CHECKED BY	WSS

DAVIS ENGINEERING SERVICE, INC.  
ALAMOSA, COLORADO 81101  
PHONE: (719) 589-3004  
FAX: (719) 589-1712

0" 1" 1.5" 2"  
ELEVATION BASE ASSUMED



- LEGEND**
- x — EXISTING FENCE
  - - - - 1' CONTOUR
  - - - - PROPOSED PIPELINE
  - x — APPROXIMATE PROPERTY LINE
  - Ⓜ PROPOSED AUGMENTATION WELL
  - ★ GPS BASE / CONTROL POINT

Special Improvement District No. 5  
8805 Independence Way  
Alamosa, CO 81101

2026 Augmentation Pipelines  
Pipeline C  
Proposed Construction Map

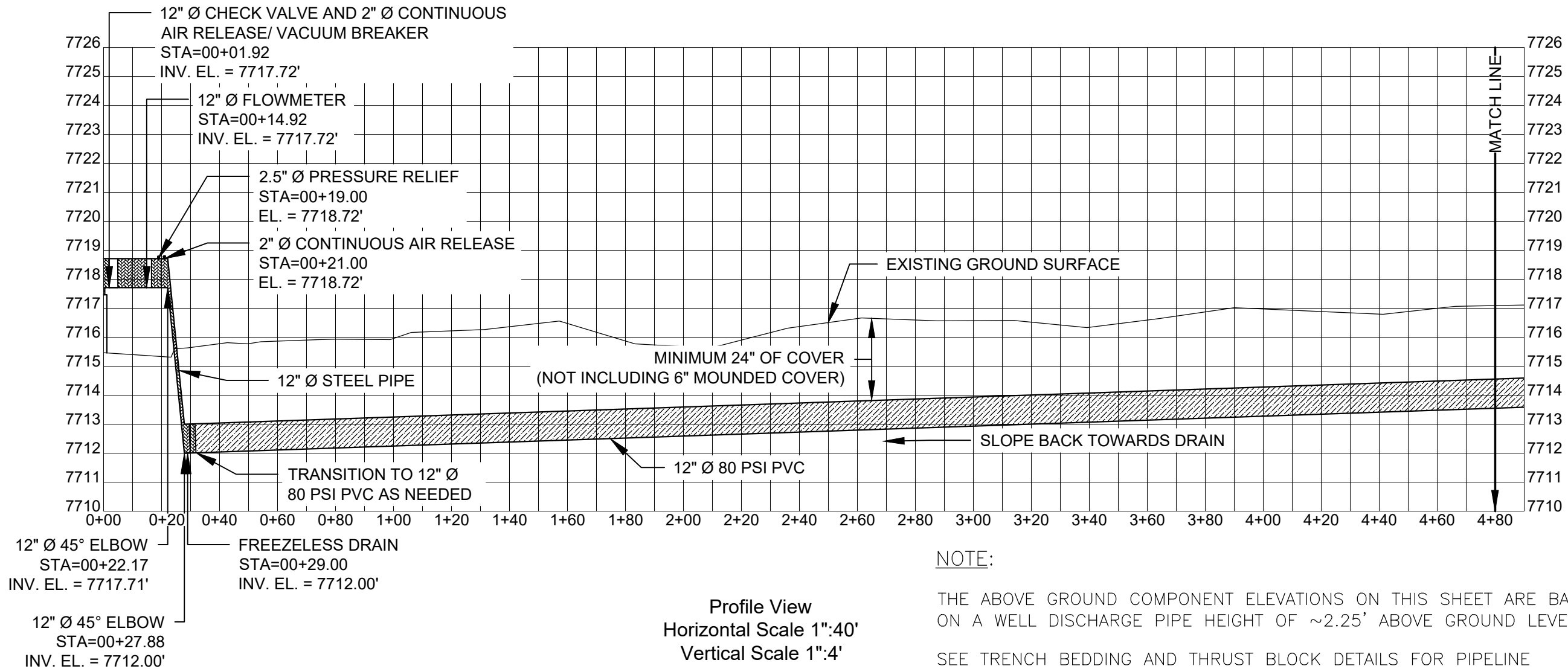
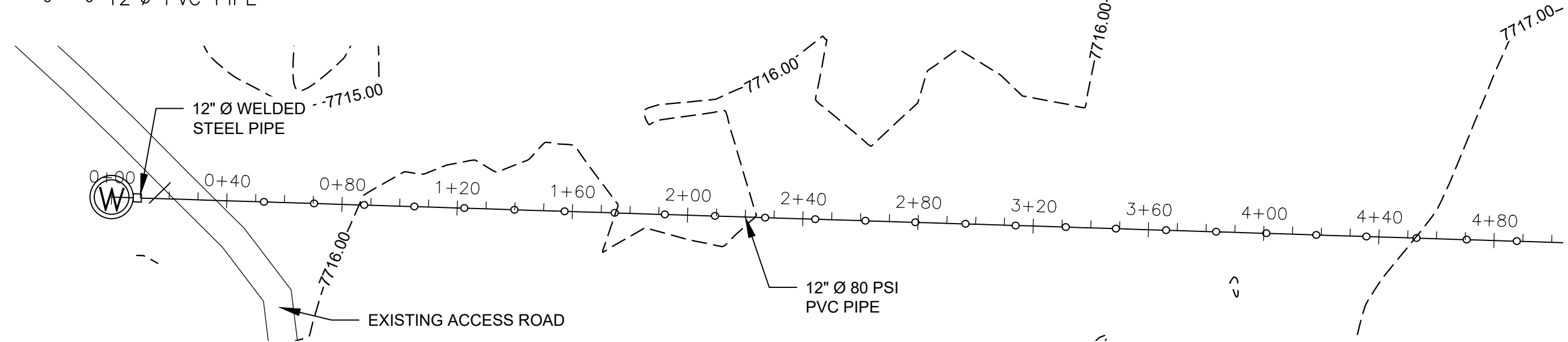
E02068

Sheet 18 of 24

**LEGEND**

- 12"Ø WELDED STEEL PIPE    - - - - - 1' CONTOUR
- 12"Ø PVC PIPE

Plan View  
Scale 1":40'

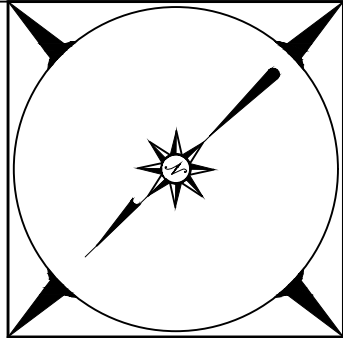


**NOTE:**

THE ABOVE GROUND COMPONENT ELEVATIONS ON THIS SHEET ARE BASED ON A WELL DISCHARGE PIPE HEIGHT OF ~2.25' ABOVE GROUND LEVEL.

SEE TRENCH BEDDING AND THRUST BLOCK DETAILS FOR PIPELINE INSTALLATION REQUIREMENTS.

Profile View  
Horizontal Scale 1":40'  
Vertical Scale 1":4'



**DAVIS ENGINEERING SERVICE, INC.**



THIS DRAWING IS THE PROPERTY OF DAVIS ENGINEERING SERVICE, INC. AND IS NOT TO BE REPRODUCED, COPIED, OR TRANSMITTED IN ANY FORM OR BY ANY MEANS WITHOUT THE WRITTEN APPROVAL OF DAVIS ENGINEERING SERVICE, INC.

PROJECT	AS NOTED	DATE	3/23/26
CHECKED	CMP	APPROVED	CMP
DESIGNED	WSS	DATE	
BY		DATE	
REV.		DATE	



Special Improvement District No. 5  
8805 Independence Way  
Alamosa, CO 81101

2026 Augmentation Pipelines

Pipeline C  
Plan & Profile 1

E02068

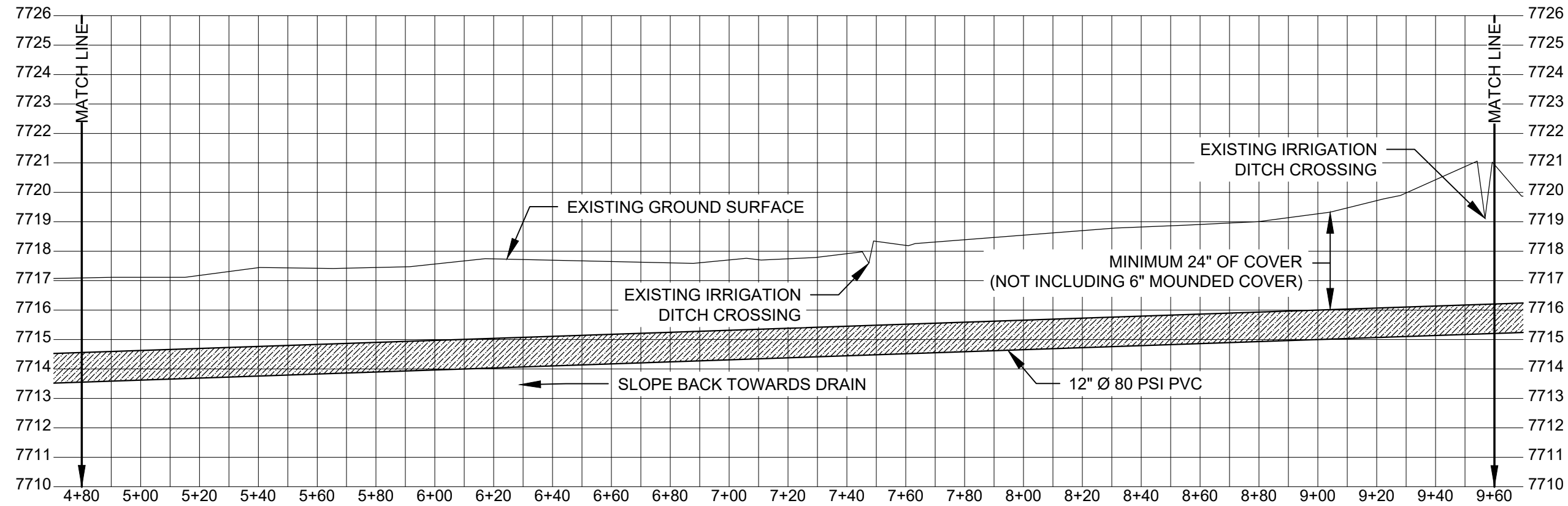
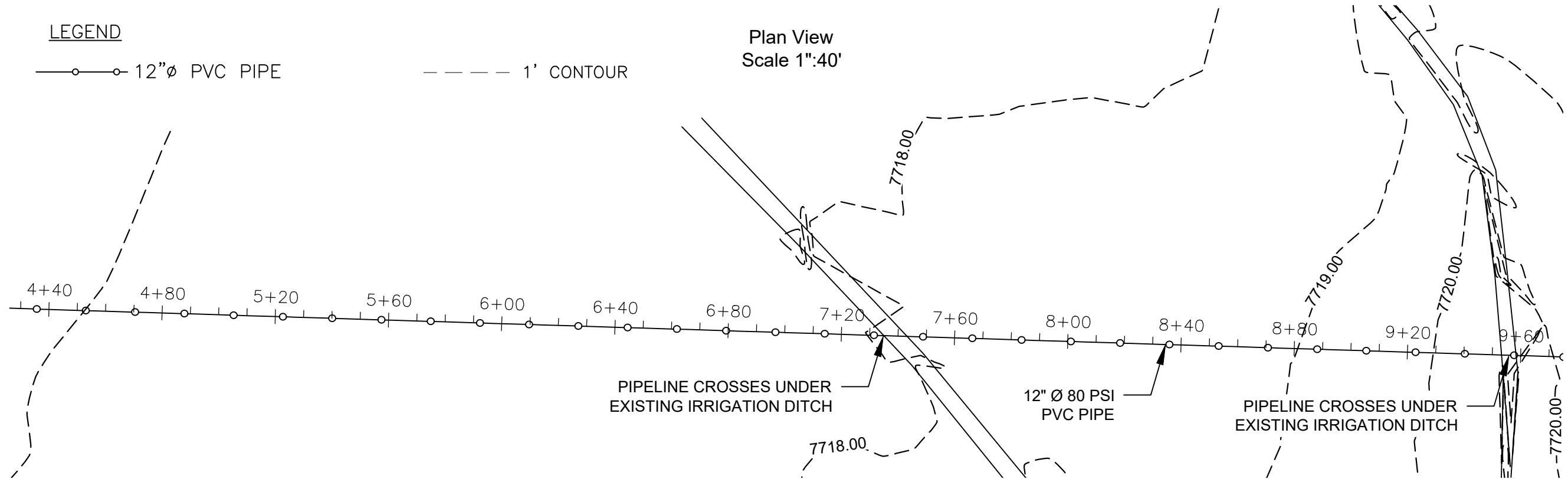
Sheet 19 of 24

**LEGEND**

—○—○— 12"Ø PVC PIPE

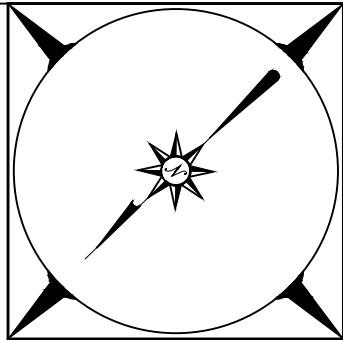
- - - - 1' CONTOUR

Plan View  
Scale 1":40'

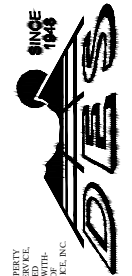


Profile View  
Horizontal Scale 1":40'  
Vertical Scale 1":4'

**NOTE:**  
SEE TRENCH BEDDING AND THRUST BLOCK DETAILS FOR PIPELINE INSTALLATION REQUIREMENTS.

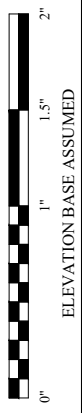


**DAVIS ENGINEERING SERVICE, INC.**



THIS DRAWING IS THE PROPERTY OF DAVIS ENGINEERING SERVICE, INC. AND IS NOT TO BE REPRODUCED, COPIED, OR TRANSMITTED IN ANY FORM OR BY ANY MEANS, WITHOUT THE WRITTEN APPROVAL OF DAVIS ENGINEERING SERVICE, INC.

PROJECT	DATE	APPROVED	DATE
CMP/WSS	3/23/26	CMP	
WSS			
REV.	DATE	BY	APP'D.



CLIENT  
Special Improvement District No. 5  
8805 Independence Way  
Alamosa, CO 81101

2026 Augmentation Pipelines

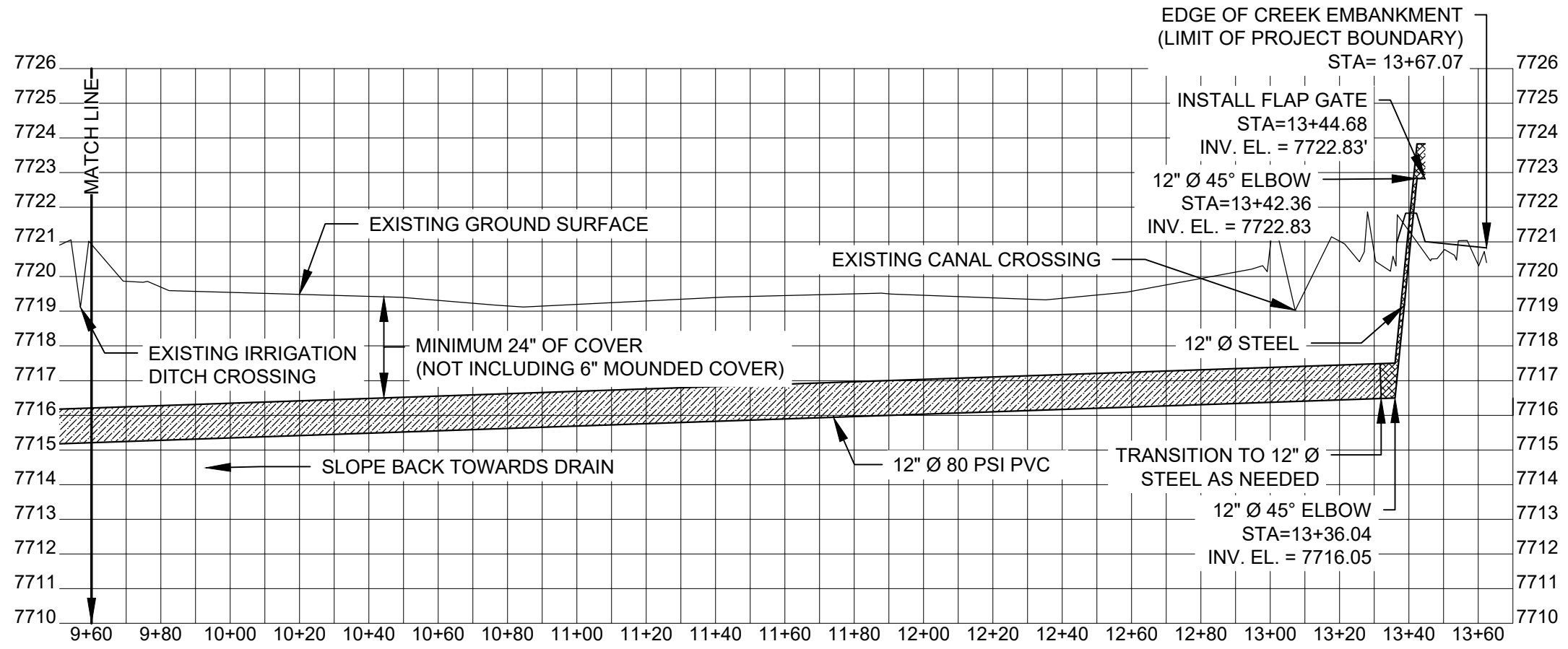
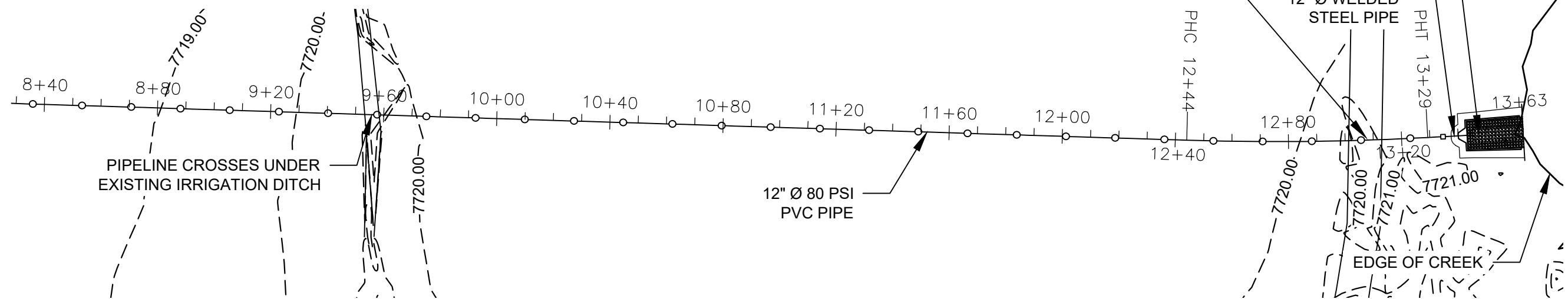
Pipeline C  
Plan & Profile 2

E02068

**LEGEND**

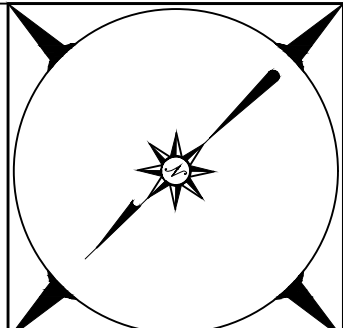
- 12"Ø WELDED STEEL PIPE    - - - - 1' CONTOUR
- 12"Ø PVC PIPE

Plan View  
Scale 1":40'



**NOTE:**  
SEE TRENCH BEDDING AND THRUST BLOCK DETAILS FOR PIPELINE INSTALLATION REQUIREMENTS. A GENTLE CURVE IS PLANNED TO ALIGN TO PIPELINE WITH THE DISCHARGE CHANNEL

Profile View  
Horizontal Scale 1":40'  
Vertical Scale 1":4'



**DAVIS ENGINEERING SERVICE, INC.**

DAVIS ENGINEERING SERVICE, INC.  
1044  
1944  
DAVIS ENGINEERING SERVICE, INC.  
1044  
1944

DESIGNED BY	DATE	APPROVED BY	DATE
CHECKED BY	DATE	APPROVED BY	DATE
PROJECT NO.	AS NOTED	DATE	3/23/26
DESIGNED BY	DATE	APPROVED BY	DATE
CHECKED BY	DATE	APPROVED BY	DATE
PROJECT NO.	AS NOTED	DATE	3/23/26

THIS DRAWING IS THE PROPERTY OF DAVIS ENGINEERING SERVICE, INC. AND IS NOT TO BE REPRODUCED, COPIED, OR TRANSMITTED IN ANY FORM OR BY ANY MEANS, WITHOUT THE WRITTEN APPROVAL OF DAVIS ENGINEERING SERVICE, INC.

ELEVATION BASE ASSUMED



Special Improvement District No. 5  
8805 Independence Way  
Alamosa, CO 81101

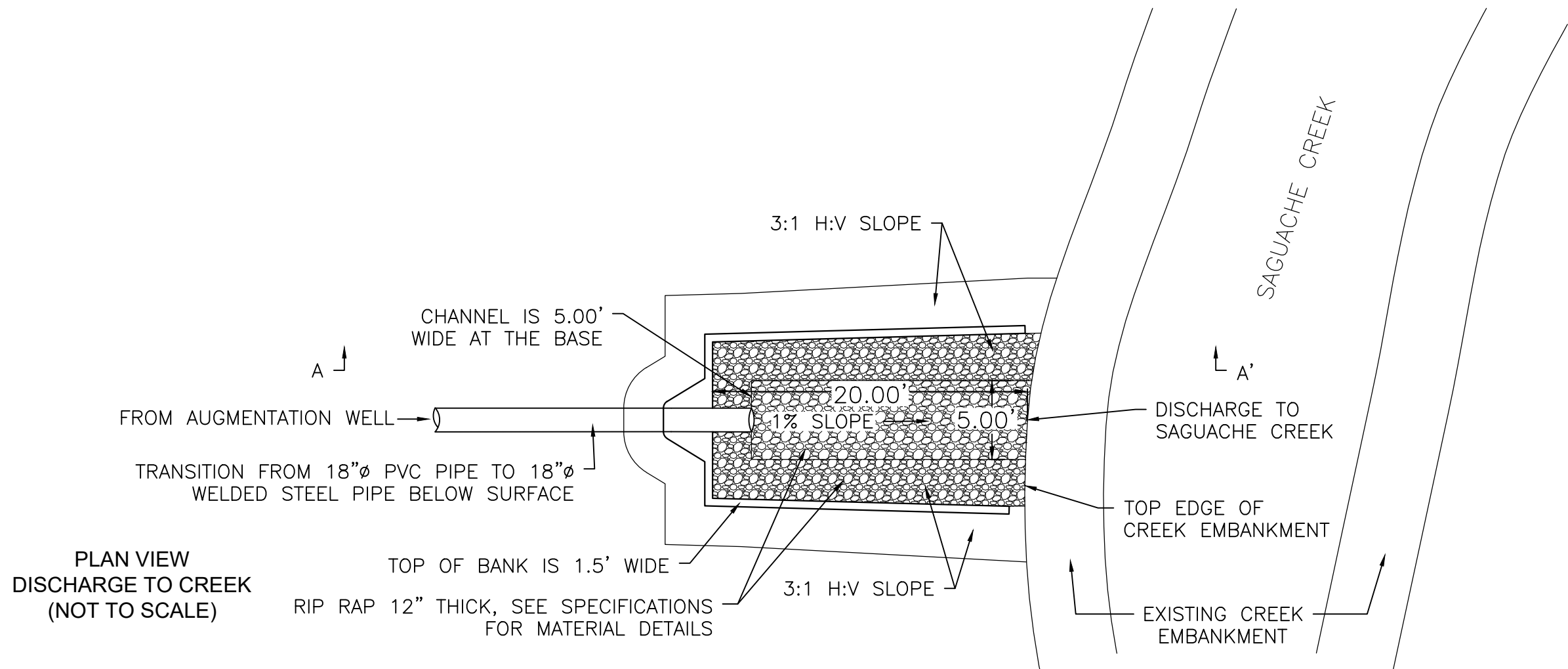
2026 Augmentation Pipelines

Pipeline C  
Plan & Profile 3

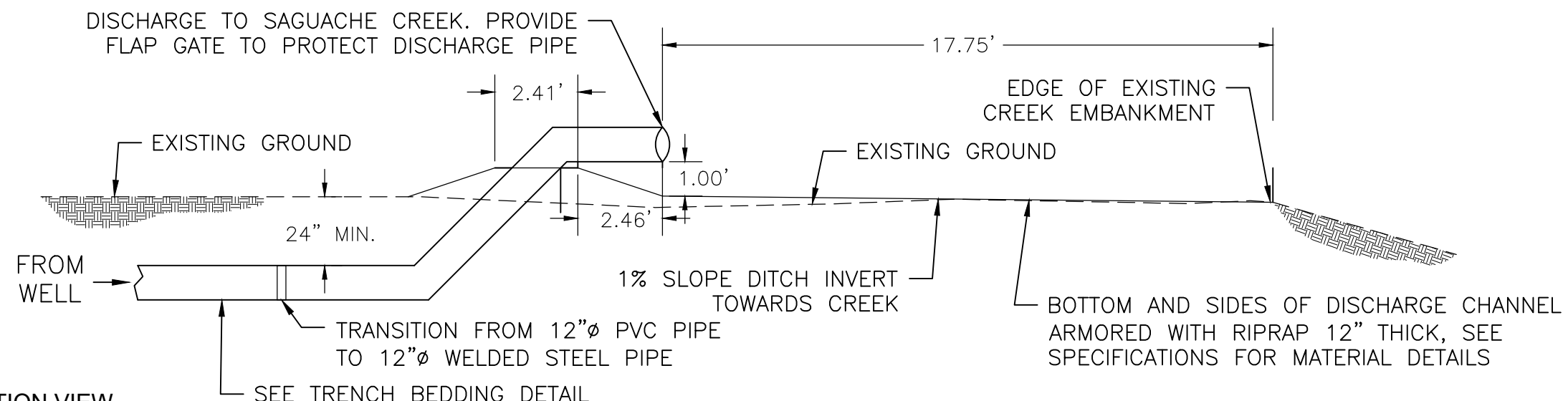
E02068

Sheet 21 of 24

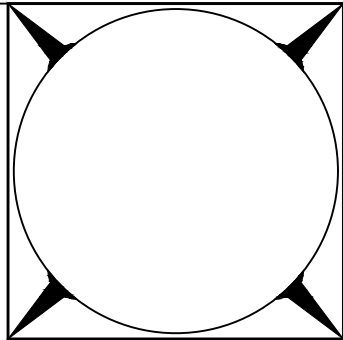




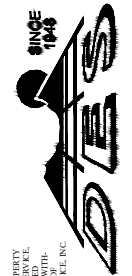
PLAN VIEW  
DISCHARGE TO CREEK  
(NOT TO SCALE)



SECTION VIEW  
DISCHARGE TO CREEK (A - A')  
(NOT TO SCALE)

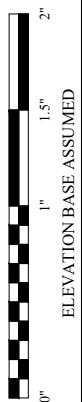


DAVIS ENGINEERING SERVICE, INC.



THIS DRAWING IS THE PROPERTY OF DAVIS ENGINEERING SERVICE, INC. AND IS NOT TO BE REPRODUCED, COPIED, OR TRANSMITTED IN ANY FORM OR BY ANY MEANS WITHOUT THE WRITTEN APPROVAL OF DAVIS ENGINEERING SERVICE, INC.

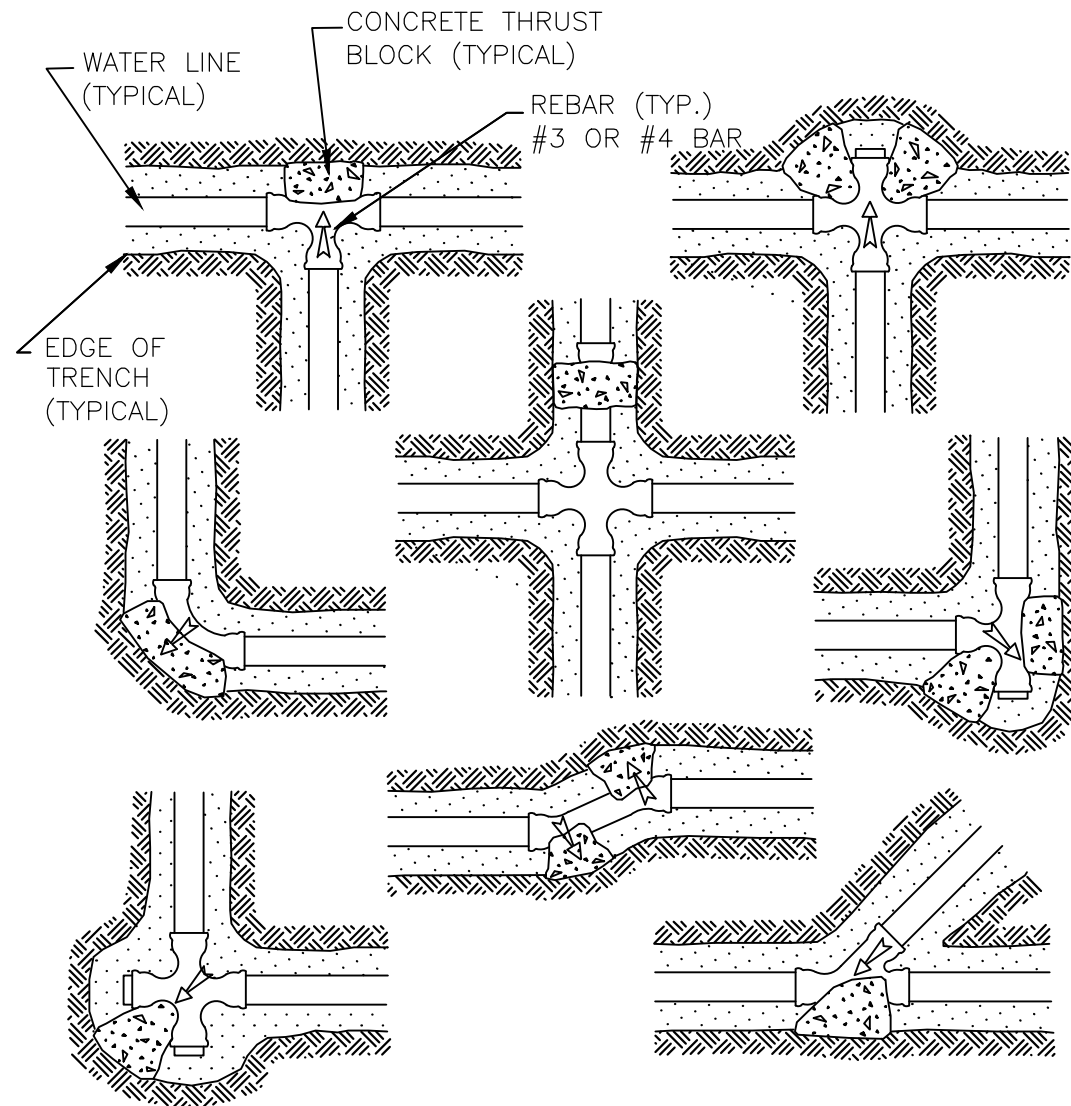
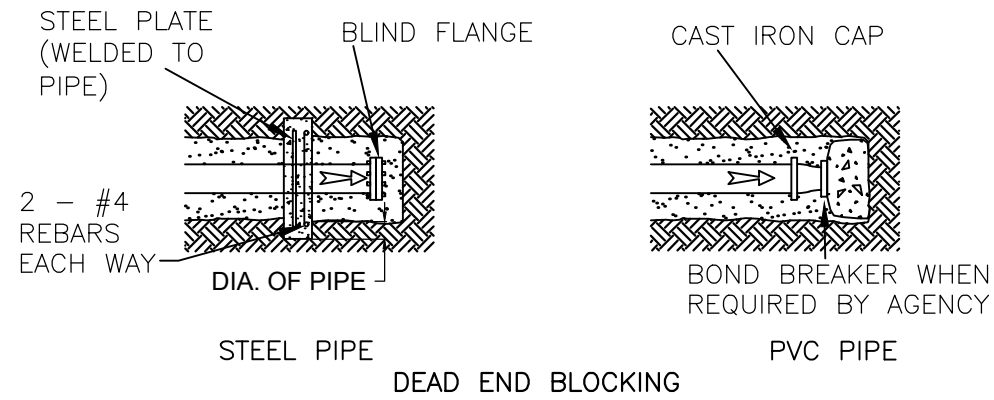
PROJECT	DATE	APPROVED	DATE
CMP/WSS	3/23/26	CMP	
WSS			
REV.	DATE	BY	APP'D.



Special Improvement District No. 5  
8805 Independence Way  
Alamosa, CO 81101

2026 Augmentation Pipelines  
Pipeline C  
Detail Sheet 2

E02068



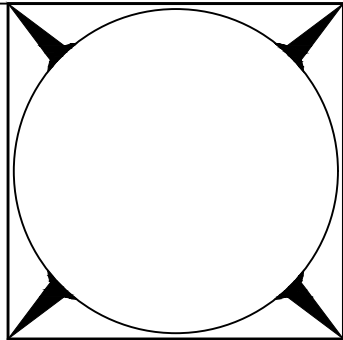
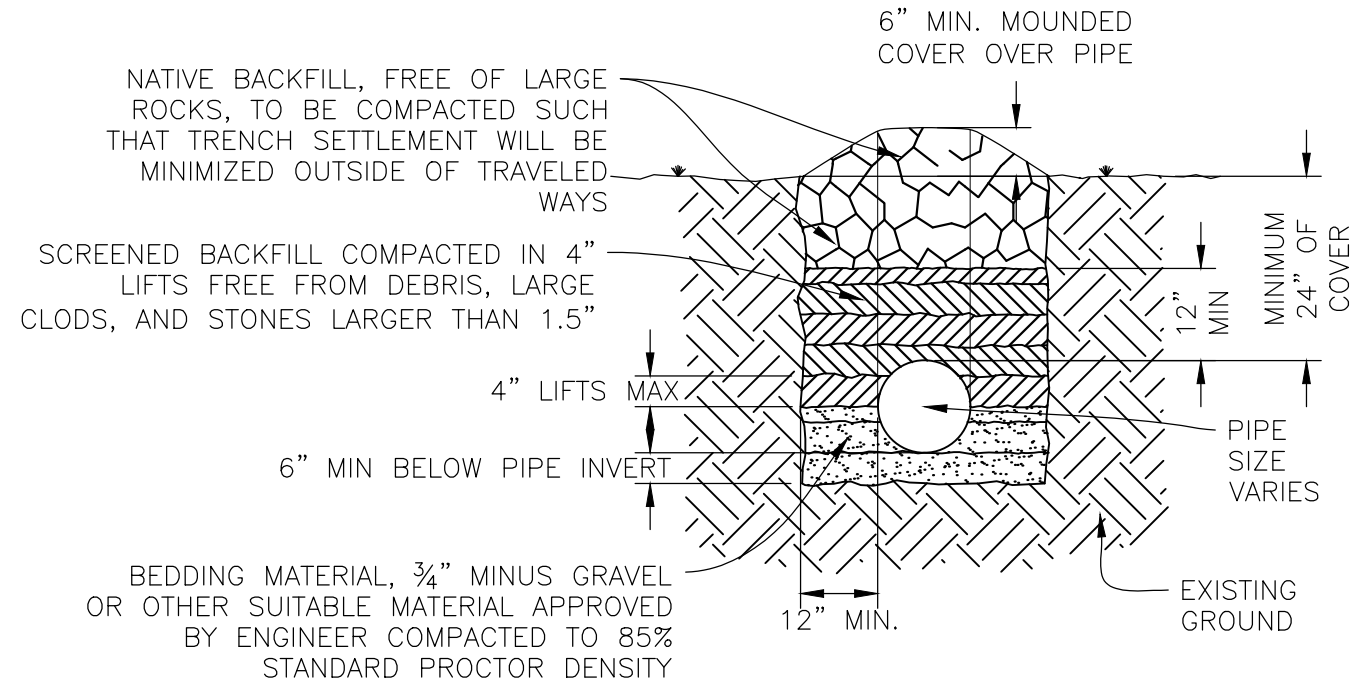
TYPICAL CONCRETE THRUST BLOCK DETAILS  
NO SCALE

- NOTES:
- 1 CONCRETE SHALL BE 470-C-2000.
  - 2 SEE DRAWING FOR BEARING AREAS.
  - 3 BEARING AREAS TO BE FLAT AND CORNERS SQUARE

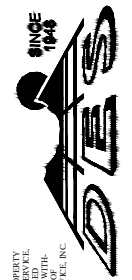
NATIVE BACKFILL, FREE OF LARGE ROCKS, TO BE COMPACTED SUCH THAT TRENCH SETTLEMENT WILL BE MINIMIZED OUTSIDE OF TRAVELED WAYS

SCREENED BACKFILL COMPACTED IN 4" LIFTS FREE FROM DEBRIS, LARGE CLOUDS, AND STONES LARGER THAN 1.5"

BEDDING MATERIAL, 3/4" MINUS GRAVEL OR OTHER SUITABLE MATERIAL APPROVED BY ENGINEER COMPACTED TO 85% STANDARD PROCTOR DENSITY



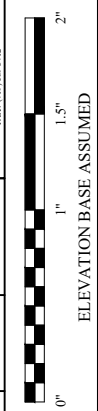
DAVIS ENGINEERING SERVICE, INC.



THIS DRAWING IS THE PROPERTY OF DAVIS ENGINEERING SERVICE, INC. AND IS NOT TO BE REPRODUCED, COPIED, OR TRANSMITTED IN ANY FORM OR BY ANY MEANS WITHOUT THE WRITTEN APPROVAL OF DAVIS ENGINEERING SERVICE, INC.

DATE	AS NOTED	DATE	3/23/26
CHECKED	AS NOTED	DATE	3/23/26
DESIGNED	AS NOTED	DATE	3/23/26
DRAWN	AS NOTED	DATE	3/23/26
IN CHARGE	AS NOTED	DATE	3/23/26
APPROVED	AS NOTED	DATE	3/23/26
CMP	AS NOTED	DATE	3/23/26
WSS	AS NOTED	DATE	3/23/26

REV.	DATE	BY	APP'D.



Special Improvement District No. 5  
8805 Independence Way  
Alamosa, CO 81101

2026 Augmentation Pipelines

General Detail Sheet

E02068